

## **Agenda**

**Jefferson County  
Finance Committee**  
Jefferson County Courthouse  
320 S. Main Street  
Room 112  
Jefferson, WI 53549

Date: Thursday, February 14, 2013

Time: 9:30 a.m.

Committee members:	Braugher, James B.	Mode, Jim (Vice-Chair)
	Hanneman, Jennifer (Secretary)	Molinaro, John
	Jones, Richard C. (Chair)	

1. Call to order
2. Roll call (establish a quorum)
3. Certification of compliance with the Open Meetings Law
4. Review of the agenda
5. Citizen comments
6. Approval of Finance Committee minutes for January 10, 2013
7. Communications
8. Discussion and possible action regarding prior out of state travel to Iowa City, IA by a Human Services Department employee to attend a staff training event.
9. Review tax foreclosed real estate properties and determine parcels to sell and at what price
10. Review and discussion regarding the 2014 budget calendar including possible budget goals
11. Discussion regarding the County's 5-year Financial Plan
12. Discussion of 2012 department surplus/deficits
13. Update on contingency fund balance
14. Convene in closed session pursuant to Wisconsin State Statutes Section 19.85 (1) (e) and (g) to confer with legal counsel and deliberate the potential settlement of the Highway Department fuel spill in October 2012.
15. Reconvene in open session for consideration and possible action regarding items discussed in closed session.
16. Set future meeting schedule, next meeting date, and possible agenda items
17. Payment of invoices
18. Adjourn

Next scheduled meetings:

Tuesday, February 26, 2013	Special meeting
Thursday, March 14, 2013	Regular meeting
Thursday, April 11, 2013	Regular Meeting
Thursday, May 9, 2013	Regular Meeting

All meetings are scheduled to begin at 8:30 am unless otherwise noted

*The Board may discuss and/or take action on any item specifically listed on the agenda  
Individuals requiring special accommodations for attendance at the meeting should contact the  
County Administrator 24 hours prior to the meeting at 920-674-7101 so appropriate  
arrangements can be made.*

Jefferson County  
Finance Committee Minutes  
January 10, 2013

Committee members: Braughler, James B.  
Hanneman, Jennifer  
Jones, Richard C. (Chair)  
Mode, Jim  
Molinaro, John

1. **Call to order** – Richard Jones called the meeting to order at 8:30 a.m.
2. **Roll call (establish a quorum)** – All committee members were present. County Board Supervisor Paul Babcock attended. Staff in attendance were Gary Petre, Brian Lamers, Tammy Worzalla, and Terri Palm. Other public was Karen Spory from the Daily Union.
3. **Certification of compliance with the Open Meetings Law** – Gary Petre certified that notice for the meeting complied with the Open Meeting Law.
4. **Review of the agenda**-No changes
5. **Citizen Comments** – None
6. **Approval of Finance Committee minutes for December 13, 2012** – A motion was made Mode/Hanneman to approve the minutes for December 13, 2012 as drafted. The motion passed 5-0.
7. **Communications** – None
8. **Discussion and possible action for approval of a capital purchase for replacement of email archiving for \$5,625. The funds will be found through savings within the MIS Department budget.** Motion was made by Mode/Hanneman to approve to approve the capital purchase. The motion passed 5-0.
9. **Discussion and possible action to approve overnight stay on January 24<sup>th</sup> for Terri Palm in Madison to attend a conference on January 24<sup>th</sup> and 25<sup>th</sup>.** Motion was made by Molinaro/Braughler to approve the overnight stay. The motion passed 5-0.
10. **Discussion regarding the department surpluses/deficits estimates for 2012.** Brian Lamers pointed out that the two departments that are a concern are the Sheriff and Fair Park Departments with estimated deficits. The Treasurer is estimated to have a surplus over budget. No action was taken.
11. **Discussion and possible action to transfer 2012 contingency funds to cover retirements in the beginning of 2013 that will be expensed in 2012.** Motion was made by Molinaro/Braughler to approve the transfer of \$73,662.07 from contingency fund (account 9802.599909) to the various department salary and fringe accounts (see listing). The motion passed 5-0.

Wages-Sick Leave	81.511310	\$25,377.02
Wages-Vacation	81.511320	\$6,992.52
Social Security	81.512141	\$2,476.27
Retirement	81.512142	\$405.57
Wages-Sick Leave	1901.511310	\$2,735.43
Wages-Vacation	1901.511320	\$3,114.09

Social Security	1901.512141	\$447.49
Retirement	1901.512142	\$180.62
Wages-Sick Leave	2401.511310	\$1,377.95
Wages-Vacation	2401.511320	\$4,230.45
Social Security	2401.512141	\$429.04
Retirement	2401.512142	\$245.37
Wages-Sick Leave	2201.511310	\$8,830.59
Wages-Vacation	2201.511320	\$6,819.20
Social Security	2201.512141	\$1,197.21
Retirement	2201.512142	\$395.51
Wages-Sick Leave	5009.511310	\$2,830.44
Wages-Vacation	5009.511320	\$4,725.23
Social Security	5009.512141	\$578.01
Retirement	5009.512142	\$274.06

12. **Update on contingency fund balance**-Brian Lamers directed the Finance Committee to the schedule showing the current balance of the general contingency fund balance at \$177,645.22, the other contingency fund balance at zero which was transferred to cover the 2% wage adjustment approved by the County Board, and the vested benefits fund balance of \$170,339.43 after the transfer of \$73,662.07 in agenda item #11.
13. **Set future meeting schedule, next meeting date, and possible agenda items**-The next month's regular meeting agenda for February 14, 2013 should include an update on the anticipated department surpluses or deficits.
14. **Payment of invoices**- After review of the invoices, a motion was made by Mode/Hanneman to approve the payment of invoices totaling \$963,403.62. The motion passed 5-0.
15. **Adjourn**-A motion was made by Molinaro/Hanneman to adjourn 9:00 a.m. The motion passed 5-0.

Respectfully submitted,

Jennifer Hanneman  
Finance Committee Secretary  
Jefferson County

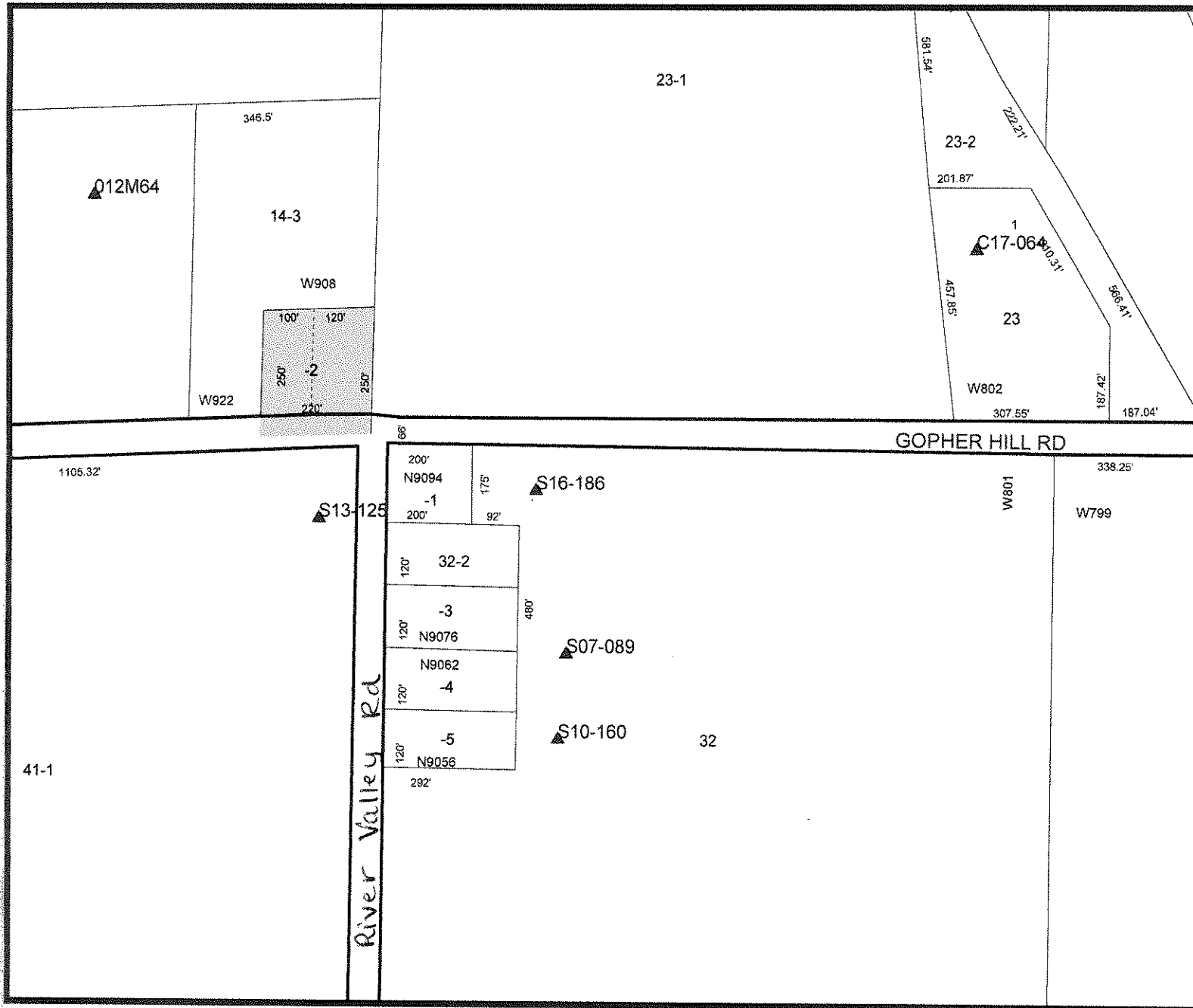
/bll

**ITEM FOR FEBRUARY 14, 2013, FINANCE COMMITTEE AGENDA:**

---

Review acquired real estate and determine parcels to sell and at what price (Re: Foreclosure of Tax Liens for 2012, List No. 1)





# Legend

- ▲ Surveys
- Streams Etc.
- Mcd Boundaries
- Parcels

012-0816-1014-002

Map Printed on: December 26, 2012

DISCLAIMER: This map is not a substitute for an actual field survey or onsite investigation. The accuracy of this map is limited to the quality of the records from which it was assembled. Other inherent inaccuracies occur during the compilation process. Jefferson County makes no warranty whatsoever concerning this information.



Legend

- ▲ Surveys
- Streams Etc.
- Mcd Boundaries
- Highway Plats
- Parcels

012-0816-1014-002



Map Printed on: January 22, 2013



DISCLAIMER: This map is not a substitute for an actual field survey or onsite investigation. The accuracy of this map is limited to the quality of the records from which it was assembled. Other inherent inaccuracies occur during the compilation process. Jefferson County makes no warranty whatsoever concerning this information.

TOWN OF IXONIA  
DONNA HANN, TREASURER  
PO BOX 109  
IXONIA WI 53036-0109

**JEFFERSON COUNTY - STATE OF WISCONSIN  
PROPERTY TAX BILL FOR 2012  
REAL ESTATE**

VON BRUENCHENHEIN, GEORGE  
CO # 012-0285-00000  
PIN # 012-0816-1014-002  
BILL/PAGE NO. 355

**Important:** Be sure this description covers your property. Note that this description is for tax bill only and may not be a full legal description. See reverse side for important information.

**Legal Description/Location of Property**

**GEORGE VON BRUENCHENHEIN  
GEORGIA M VON BRUENCHENH  
W908 GOPHER HILL RD  
IXONIA WI 53036**

GEORGE VON BRUENCHENHEIN  
GEORGIA M VON BRUENCHENHEIN  
W908 GOPHER HILL RD  
IXONIA  
BEG E/1/4/C, N250FT, W220FT,  
S250FT, E220FT TO POB.  
1.263 ACRES  
0792531/0813270/0857029  
0591807

Please inform treasurer of address changes.

ASSESSED VALUE LAND	ASSESSED VALUE IMPROVEMENTS	TOTAL ASSESSED VALUE	AVERAGE ASSMT RATIO	NET ASSESSED VALUE RATE (Does NOT reflect Credits)	NET PROPERTY TAX
58,400	47,600	106,000	107.13%	.016855570	1,613.37
ESTIMATED FAIR MARKET VALUE LAND	ESTIMATED FAIR MARKET VALUE IMPROVEMENTS	TOTAL ESTIMATED FAIR MARKET VALUE	<input checked="" type="checkbox"/> A star in this box means unpaid prior year taxes.	School taxes also reduced by school levy tax credit	
54,500	44,400	98,900		157.61	
TAXING JURISDICTION	2011 ESTIMATED STATE AIDS ALLOCATED TO TAX DISTRICT	2012 ESTIMATED STATE AIDS ALLOCATED TO TAX DISTRICT	2011 NET TAX	2012 NET TAX	% TAX CHANGE
STATE OF WISCONSIN			17.64	16.79	4.8-
JEFFERSON COUNTY	239,628	241,654	461.90	463.88	.4
TOWN OF IXONIA	218,956	219,158	251.26	249.54	.7-
OCONOMOWOC SCH DIS	504,313	504,257	876.20	927.79	5.9
WCTC	31,348	30,755	130.08	128.69	1.1-
<b>TOTALS</b>	994,245	995,824	1,737.09	1,786.69	2.9
<b>FIRST DOLLAR CREDIT</b>			67.38	72.40	7.5
<b>LOTTERY &amp; GAMING CREDIT</b>			89.17	100.92	13.2
<b>NET TAX</b>			1,580.54	1,613.37	2.1
<b>TOTAL DUE: 1,613.37</b> FOR FULL PAYMENT, PAY TO LOCAL TREASURER BY: <b>JANUARY 31, 2013</b> Warning: If not paid by due dates, installment option is lost and total tax is delinquent subject to interest and if applicable penalty (See reverse)					

PAY 1ST INSTALLMENT OF: 756.37 AND PAY 2ND INSTALLMENT OF: 857.00 OR PAY FULL AMOUNT OF: 1,613.37

PAY 1ST INSTALLMENT OF: 756.37 AND PAY 2ND INSTALLMENT OF: 857.00 OR PAY FULL AMOUNT OF: 1,613.37  
By JANUARY 31, 2013 BY JULY 31, 2013 BY JANUARY 31, 2013

Amount Enclosed \_\_\_\_\_ Amount Enclosed \_\_\_\_\_ Amount Enclosed \_\_\_\_\_

TO LOCAL TREASURER

TO COUNTY TREASURER

TO LOCAL TREASURER

Make Check Payable To:

Make Check Payable To:

Make Check Payable To:

TOWN OF IXONIA  
DONNA HANN, TREASURER  
PO BOX 109  
IXONIA WI 53036-0109

JOHN JENSEN  
JEFFERSON COUNTY TREASURER  
320 SOUTH MAIN STREET  
JEFFERSON WI 53549-1799

TOWN OF IXONIA  
DONNA HANN, TREASURER  
PO BOX 109  
IXONIA WI 53036-0109

PIN # 012-0816-1014-002  
VON BRUENCHENHEIN, GEORGE  
BILL/PAGE NO. 355

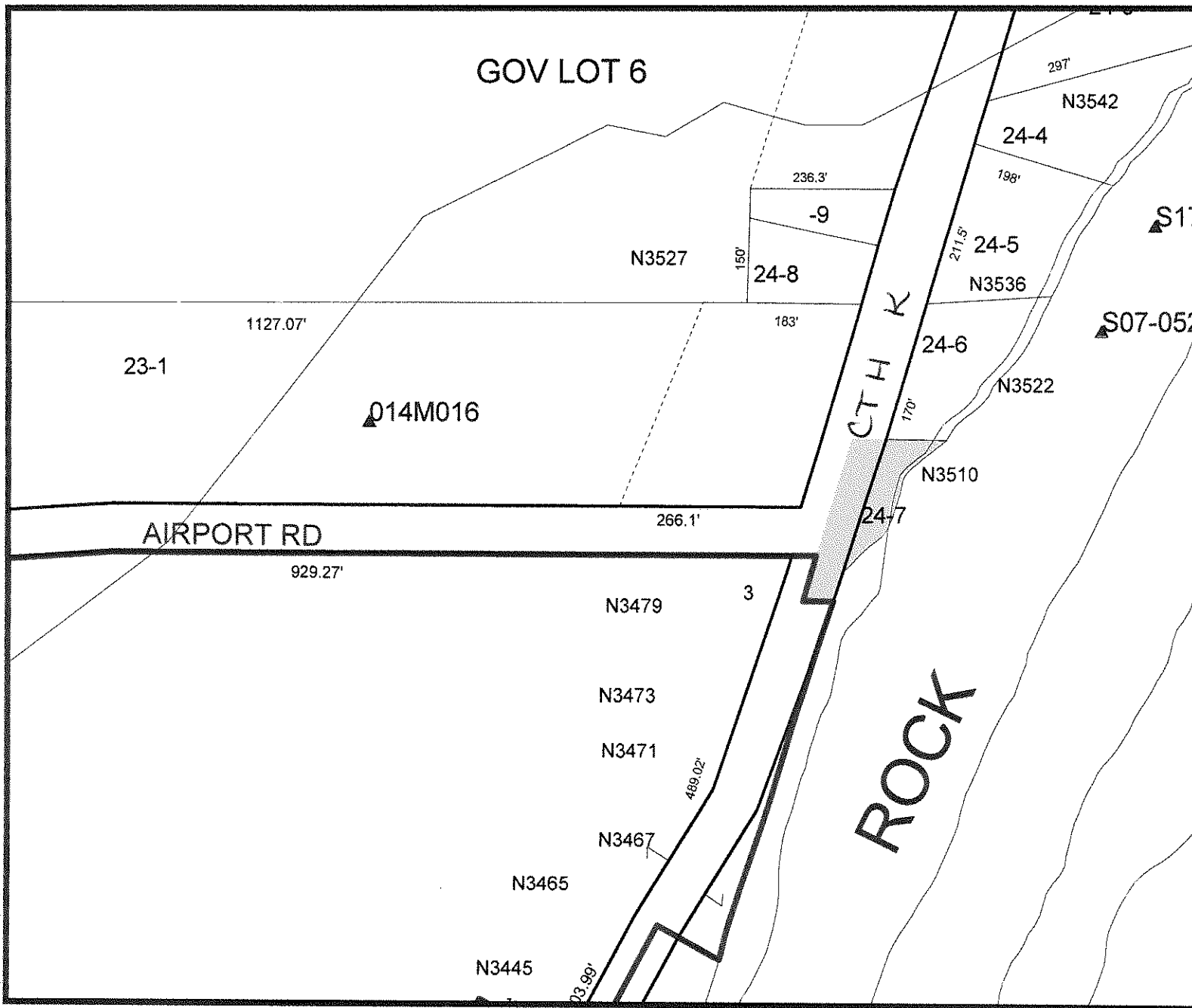
PIN # 012-0816-1014-002  
VON BRUENCHENHEIN, GEORGE  
BILL/PAGE NO. 355

PIN # 012-0816-1014-002  
VON BRUENCHENHEIN, GEORGE  
BILL/PAGE NO. 355

*Include This Stub With Your Payment*

*Include This Stub With Your Payment*

*Include This Stub With Your Payment*



# Legend

- ▲ Surveys
- Streams Etc.
- Mcd Boundaries
- Parcels

014-0614-2324-007

Map Printed on: December 26, 2012

DISCLAIMER: This map is not a substitute for an actual field survey or onsite investigation. The accuracy of this map is limited to the quality of the records from which it was assembled. Other inherent inaccuracies occur during the compilation process. Jefferson County makes no warranty whatsoever concerning this information.

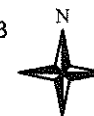


# Legend

- ▲ Surveys
- Streams Etc.
- Mcd Boundaries
- Highway Plats
- Parcels

014-0614-2324-007

Map Printed on: January 22, 2013



DISCLAIMER: This map is not a substitute for an actual field survey or onsite investigation. The accuracy of this map is limited to the quality of the records from which it was assembled. Other inherent inaccuracies occur during the compilation process. Jefferson County makes no warranty whatsoever concerning this information.



TOWN OF JEFFERSON  
ALICE FISCHER, TREASURER  
W7006 CTH J  
JEFFERSON WI 53549

# JEFFERSON COUNTY - STATE OF WISCONSIN PROPERTY TAX BILL FOR 2012 REAL ESTATE

KLEMENT, KEVIN J  
CO # 014-0642-00000  
PIN # 014-0614-2324-007  
BILL/PAGE NO. 686

**Important:** Be sure this description covers your property. Note that this description is for tax bill only and may not be a full legal description. See reverse side for important information.  
**Legal Description/Location of Property**

**KEVIN J KLEMENT  
N2536 STRUNK RD  
FORT ATKINSON WI 53538**

KEVIN J KLEMENT  
N3510 CTH K  
JEFFERSON  
BEG INTER CTH K & E-W 1/4/L,  
N397.98FT, E TO RIV, S ON RIV  
TO SD 1/4/L, W TO POB, EX BEG  
C/L CTH K 397.98FT N AT RT  
ANG TO E&W 1/4/L, N18DG37'E  
.600 ACRES  
0905952

Please inform treasurer of address changes.

ASSESSED VALUE LAND	ASSESSED VALUE IMPROVEMENTS	TOTAL ASSESSED VALUE	AVERAGE ASSMT RATIO	NET ASSESSED VALUE RATE (Does NOT reflect Credits)	NET PROPERTY TAX
23,400	10,400	33,800	104.26%	.017499158	518.28
ESTIMATED FAIR MARKET VALUE LAND	ESTIMATED FAIR MARKET VALUE IMPROVEMENTS	TOTAL ESTIMATED FAIR MARKET VALUE	<input checked="" type="checkbox"/> A star in this box means unpaid prior year taxes.	School taxes also reduced by school levy tax credit	GARBAGE REM 138.00 LAKE DIST 40.00
22,400	10,000	32,400		58.38	
TAXING JURISDICTION	2011 ESTIMATED STATE AIDS ALLOCATED TO TAX DISTRICT	2012 ESTIMATED STATE AIDS ALLOCATED TO TAX DISTRICT	2011 NET TAX	2012 NET TAX	% TAX CHANGE
STATE OF WISCONSIN			5.97	5.51	7.6-
JEFFERSON COUNTY	107,522	104,069	156.22	152.25	2.5-
TOWN OF JEFFERSON	159,464	166,366	79.18	72.95	7.9-
JEFFERSON SCH DIST	1665,065	1746,700	333.99	301.80	9.6-
MATC	33,038	33,252	60.10	58.96	1.9-
<b>TOTALS</b>	1,965,089	2,050,387	635.45	591.47	6.9-
<b>FIRST DOLLAR CREDIT</b>			75.26	73.19	2.8-
<b>LOTTERY &amp; GAMING CREDIT</b>					
<b>NET TAX</b>			560.19	518.28	7.5-
<b>TOTAL DUE: 696.28</b> FOR FULL PAYMENT, PAY TO LOCAL TREASURER BY: <b>JANUARY 31, 2013</b> Warning: If not paid by due dates, installment option is lost and total tax is delinquent subject to interest and if applicable penalty (See reverse)					

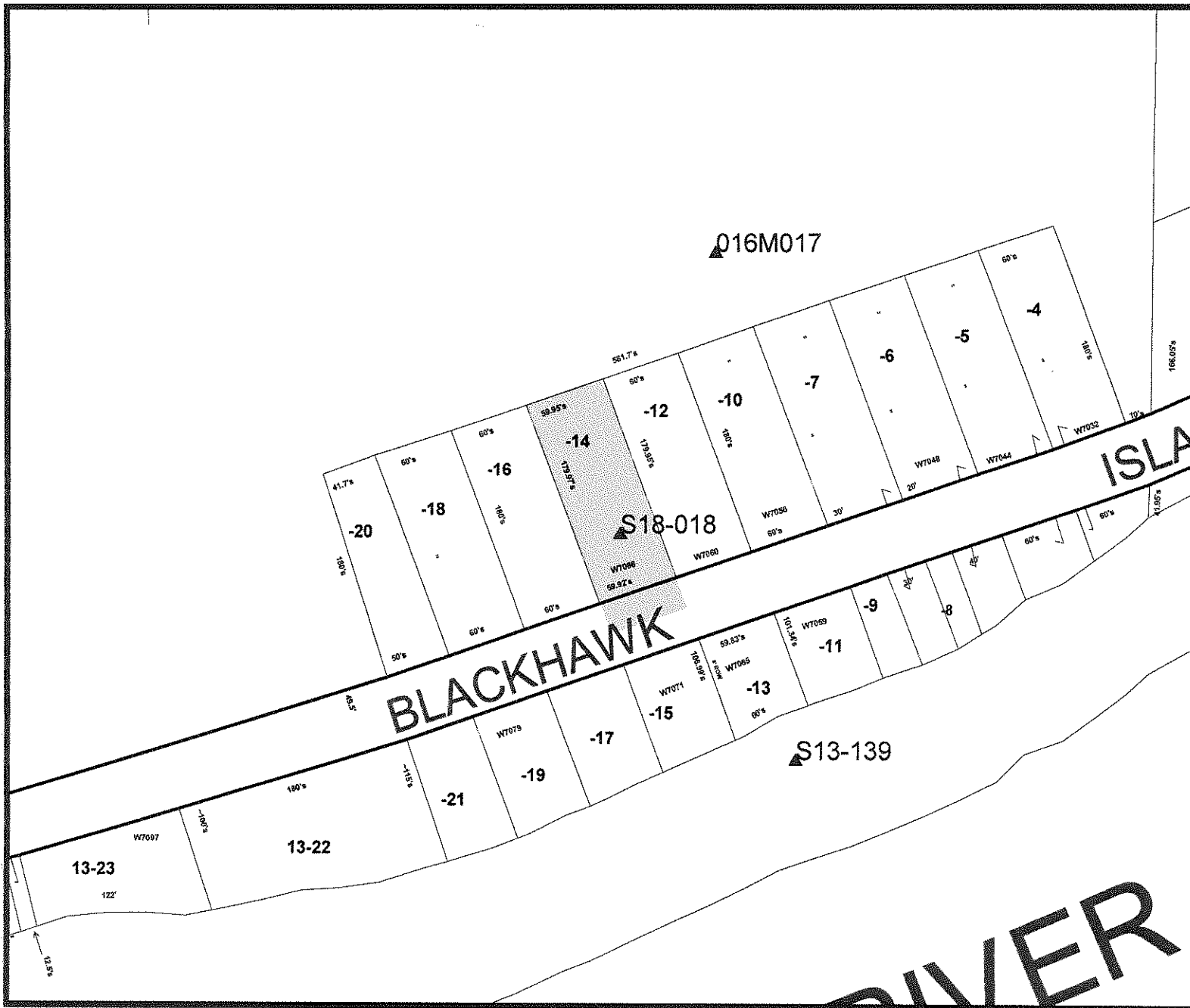
PAY 1ST INSTALLMENT OF: 437.28 AND PAY 2ND INSTALLMENT OF: 259.00 OR PAY FULL AMOUNT OF: 696.28

PAY 1ST INSTALLMENT OF: 437.28 By JANUARY 31, 2013 Amount Enclosed _____ TO LOCAL TREASURER Make Check Payable To: TOWN OF JEFFERSON ALICE FISCHER, TREASURER W7006 CTH J JEFFERSON WI 53549 PIN # 014-0614-2324-007 KLEMENT, KEVIN J BILL/PAGE NO. 686	AND PAY 2ND INSTALLMENT OF: 259.00 BY JULY 31, 2013 Amount Enclosed _____ TO COUNTY TREASURER Make Check Payable To: JOHN JENSEN JEFFERSON COUNTY TREASURER 320 SOUTH MAIN STREET JEFFERSON WI 53549-1799 PIN # 014-0614-2324-007 KLEMENT, KEVIN J BILL/PAGE NO. 686	OR PAY FULL AMOUNT OF: 696.28 BY JANUARY 31, 2013 Amount Enclosed _____ TO LOCAL TREASURER Make Check Payable To: TOWN OF JEFFERSON ALICE FISCHER, TREASURER W7006 CTH J JEFFERSON WI 53549 PIN # 014-0614-2324-007 KLEMENT, KEVIN J BILL/PAGE NO. 686
--	---	---

*Include This Stub With Your Payment*

*Include This Stub With Your Payment*

*Include This Stub With Your Payment*



# Legend

- ▲ Surveys
- Streams Etc.
- Mcd Boundaries
- Parcels

016-0514-1813-014

DISCLAIMER: This map is not a substitute for an actual field survey or onsite investigation. The accuracy of this map is limited to the quality of the records from which it was assembled. Other inherent inaccuracies occur during the compilation process. Jefferson County makes no warranty whatsoever concerning this information.

Map Printed on: December 26, 2012





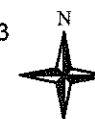
## Legend

- ▲ Surveys
- Streams Etc.
- Mcd Boundaries
- Highway Plats
- Parcels

016-0514-1813-014

0 200 400 Feet

Map Printed on: January 22, 2013



DISCLAIMER: This map is not a substitute for an actual field survey or onsite investigation. The accuracy of this map is limited to the quality of the records from which it was assembled. Other inherent inaccuracies occur during the compilation process. Jefferson County makes no warranty whatsoever concerning this information.



TOWN OF KOSHKONONG  
DAN GEBAUER, TREASURER  
W5609 STAR SCHOOL RD  
FORT ATKINSON WI 53538

**JEFFERSON COUNTY - STATE OF WISCONSIN  
PROPERTY TAX BILL FOR 2012  
REAL ESTATE**

FELTY, BERNETA  
CO # 016-1299-00000  
PIN # 016-0514-1813-014  
BILL/PAGE NO. 2108

**Important:** Be sure this description covers your property. Note that this description is for tax bill only and may not be a full legal description. See reverse side for important information.

**Legal Description/Location of Property**

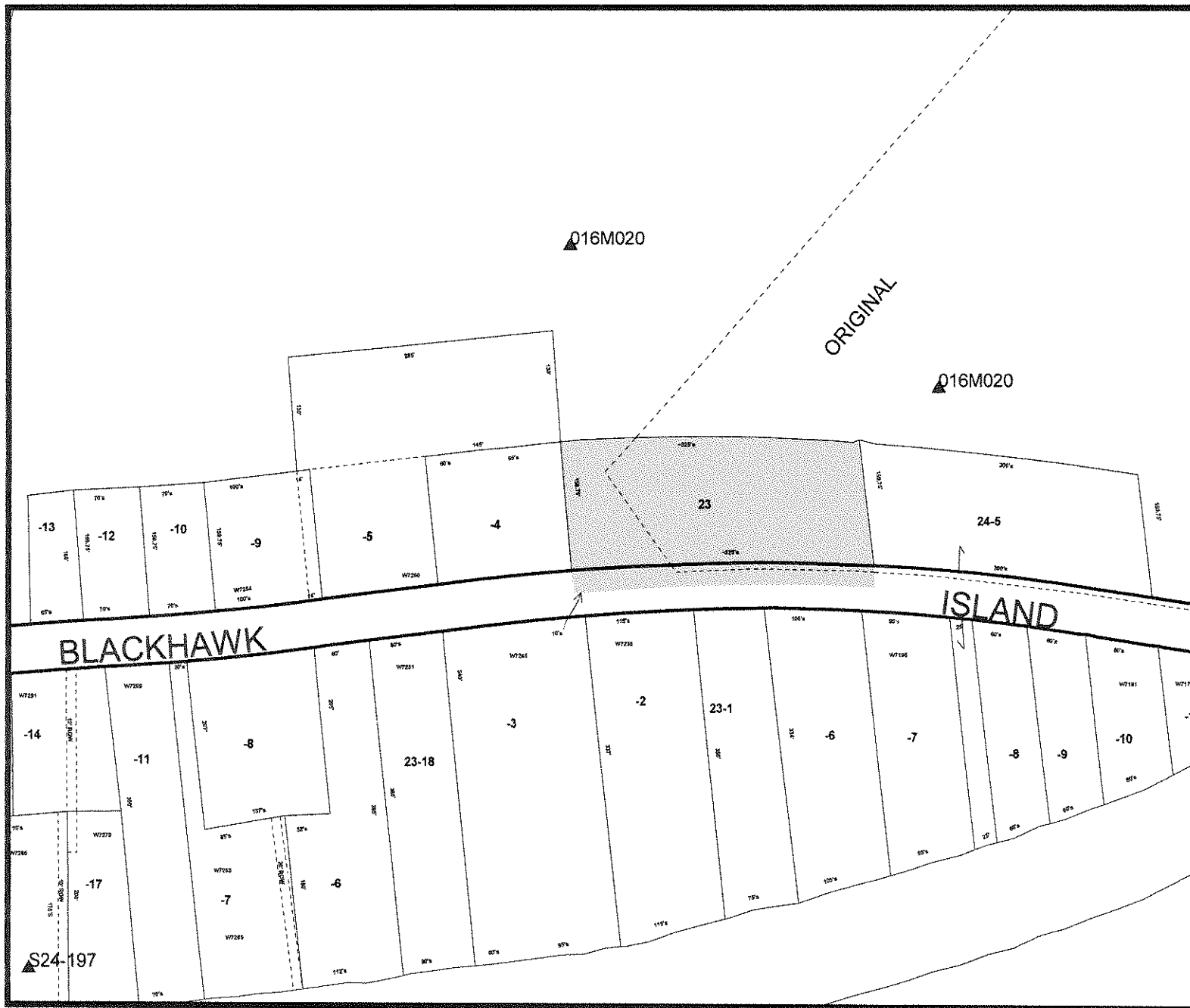
**BERNETA FELTY CHRISTIAN  
W7066 BLACKHAWK ISLAND R  
FORT ATKINSON WI 53538**

BERNETA FELTY  
W7066 BLACKHAWK ISLAND RD  
FORT ATKINSON  
BEG ON BLACKHAWK ISLAND RD  
520FT E OF N&S 1/4/L, N18DG  
22°W 180FT, NE60FT, S18DG2'  
E TO SD RD, SWLY TO POB  
.247 ACRES  
0801924

Please inform treasurer of address changes.

ASSESSED VALUE LAND	ASSESSED VALUE IMPROVEMENTS	TOTAL ASSESSED VALUE	AVERAGE ASSMT RATIO	NET ASSESSED VALUE RATE (Does NOT reflect Credits)	NET PROPERTY TAX
7,500	100	7,600	101.04%	.016979251	55.46
ESTIMATED FAIR MARKET VALUE LAND	ESTIMATED FAIR MARKET VALUE IMPROVEMENTS	TOTAL ESTIMATED FAIR MARKET VALUE	<input checked="" type="checkbox"/> A star in this box means unpaid prior year taxes.	School taxes also reduced by school levy tax credit	LAKE DIST 40.00
7,400	100	7,500		13.76	
TAXING JURISDICTION	2011 ESTIMATED STATE AIDS ALLOCATED TO TAX DISTRICT	2012 ESTIMATED STATE AIDS ALLOCATED TO TAX DISTRICT	2011 NET TAX	2012 NET TAX	% TAX CHANGE
STATE OF WISCONSIN			1.74	1.28	26.3-
JEFFERSON COUNTY	203,091	200,250	45.48	35.26	22.5-
TOWN OF KOSHKONONG	190,345	190,375	11.11	8.71	21.6-
FORT ATKINSON SCH	3485,988	3673,776	93.33	70.13	24.9-
MATC	62,403	63,984	17.50	13.66	21.9-
<b>TOTALS</b>	3,941,827	4,128,385	169.16	129.04	23.7-
<b>FIRST DOLLAR CREDIT</b>			73.76	73.58	.2-
<b>LOTTERY &amp; GAMING CREDIT</b>					
<b>NET TAX</b>			95.40	55.46	.1
<b>TOTAL DUE: 95.46</b> FOR FULL PAYMENT, PAY TO LOCAL TREASURER BY: <b>JANUARY 31, 2013</b> <small>Warning: If not paid by due dates, installment option is lost and total tax is delinquent subject to interest and if applicable penalty (See reverse)</small>					

PAY 1ST INSTALLMENT OF:	95.46	AND PAY 2ND INSTALLMENT OF:	OR PAY FULL AMOUNT OF:	95.46
PAY 1ST INSTALLMENT OF:	95.46	AND PAY 2ND INSTALLMENT OF:	OR PAY FULL AMOUNT OF:	95.46
By JANUARY 31, 2013		BY JULY 31,	BY JANUARY 31,	
Amount Enclosed _____		Amount Enclosed _____	Amount Enclosed _____	
TO LOCAL TREASURER		TO COUNTY TREASURER	TO LOCAL TREASURER	
Make Check Payable To:		Make Check Payable To:	Make Check Payable To:	
TOWN OF KOSHKONONG		JOHN JENSEN	TOWN OF KOSHKONONG	
DAN GEBAUER, TREASURER		JEFFERSON COUNTY TREASURER	DAN GEBAUER, TREASURER	
W5609 STAR SCHOOL RD		320 SOUTH MAIN STREET	W5609 STAR SCHOOL RD	
FORT ATKINSON WI 53538		JEFFERSON WI 53549-1799	FORT ATKINSON WI 53538	
PIN # 016-0514-1813-014		PIN # 016-0514-1813-014	PIN # 016-0514-1813-014	
FELTY, BERNETA		FELTY, BERNETA	FELTY, BERNETA	
BILL/PAGE NO. 2108		BILL/PAGE NO. 2108	BILL/PAGE NO. 2108	
<i>Include This Stub With Your Payment</i>		<i>Include This Stub With Your Payment</i>	<i>Include This Stub With Your Payment</i>	



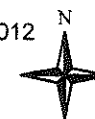
# Legend

- ▲ Surveys
- Streams Etc.
- Mcd Boundaries
- Parcels

016-0514-1823-000

0 300 600 Feet

Map Printed on: December 26, 2012



DISCLAIMER: This map is not a substitute for an actual field survey or onsite investigation. The accuracy of this map is limited to the quality of the records from which it was assembled. Other inherent inaccuracies occur during the compilation process. Jefferson County makes no warranty whatsoever concerning this information.



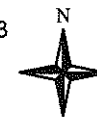
## Legend

- ▲ Surveys
- Streams Etc.
- Mcd Boundaries
- Highway Plats
- Parcels

016-0514-1823-000

0 300 600 Feet

Map Printed on: January 22, 2013



DISCLAIMER: This map is not a substitute for an actual field survey or onsite investigation. The accuracy of this map is limited to the quality of the records from which it was assembled. Other inherent inaccuracies occur during the compilation process. Jefferson County makes no warranty whatsoever concerning this information.

TOWN OF KOSHKONONG  
DAN GEBAUER, TREASURER  
W5609 STAR SCHOOL RD  
FORT ATKINSON WI 53538

**JEFFERSON COUNTY - STATE OF WISCONSIN  
PROPERTY TAX BILL FOR 2012  
REAL ESTATE**

BENFORD, BRIAN D  
CO # 016-1311-00000  
PIN # 016-0514-1823-000  
BILL/PAGE NO. 2120

**Important:** Be sure this description covers your property. Note that this description is for tax bill only and may not be a full legal description. See reverse side for important information.

**Legal Description/Location of Property**

BRIAN D BENFORD

**BRIAN D BENFORD  
2502 E MIFFLIN ST  
MADISON WI 53704**

BEG C/L BLACKHAWK ISLAND RD  
690FT ELY OF W SEC/L, N08DG  
30'W159.75FT, ELY PAR TO RD  
ABT 325FT, S08DG30'E 159.75  
FT, WLY TO POB  
1.090 ACRES  
0853663/0853664/1060277

Please inform treasurer of address changes.

ASSESSED VALUE LAND	ASSESSED VALUE IMPROVEMENTS	TOTAL ASSESSED VALUE	AVERAGE ASSMT RATIO	NET ASSESSED VALUE RATE (Does NOT reflect Credits)	NET PROPERTY TAX
3,100		3,100	101.04%	.016979251	52.64
ESTIMATED FAIR MARKET VALUE LAND	ESTIMATED FAIR MARKET VALUE IMPROVEMENTS	TOTAL ESTIMATED FAIR MARKET VALUE	<input checked="" type="checkbox"/> A star in this box means unpaid prior year taxes.	School taxes also reduced by school levy tax credit	LAKE DIST 40.00
3,100		3,100		5.61	
TAXING JURISDICTION	2011 ESTIMATED STATE AIDS ALLOCATED TO TAX DISTRICT	2012 ESTIMATED STATE AIDS ALLOCATED TO TAX DISTRICT	2011 NET TAX	2012 NET TAX	% TAX CHANGE
STATE OF WISCONSIN			.61	.52	14.1-
JEFFERSON COUNTY	203,091	200,250	15.86	14.38	9.3-
TOWN OF KOSHKONONG	190,345	190,375	3.87	3.55	8.4-
FORT ATKINSON SCH	3485,988	3673,776	32.53	28.62	12.0-
MATC	62,403	63,984	6.10	5.57	8.7-
<b>TOTALS</b>	3,941,827	4,128,385	58.97	52.64	10.7-
<b>FIRST DOLLAR CREDIT</b>					
<b>LOTTERY &amp; GAMING CREDIT</b>					
<b>NET TAX</b>			58.97	52.64	57.1
<b>TOTAL DUE: 92.64</b> <b>FOR FULL PAYMENT, PAY TO LOCAL</b> <b>TREASURER BY:</b> <b>JANUARY 31, 2013</b> <small>Warning: If not paid by due dates, installment option is lost and total tax is delinquent subject to interest and if applicable penalty (See reverse)</small>					

PAY 1ST INSTALLMENT OF: 92.64 AND PAY 2ND INSTALLMENT OF: OR PAY FULL AMOUNT OF: 92.64

PAY 1ST INSTALLMENT OF: 92.64  
By JANUARY 31, 2013

Amount Enclosed \_\_\_\_\_

TO LOCAL TREASURER

Make Check Payable To:

TOWN OF KOSHKONONG  
DAN GEBAUER, TREASURER  
W5609 STAR SCHOOL RD  
FORT ATKINSON WI 53538

PIN # 016-0514-1823-000  
BENFORD, BRIAN D  
BILL/PAGE NO. 2120

*Include This Stub With Your Payment*

AND PAY 2ND INSTALLMENT OF:  
BY JULY 31,

Amount Enclosed \_\_\_\_\_

TO COUNTY TREASURER

Make Check Payable To:

JOHN JENSEN  
JEFFERSON COUNTY TREASURER  
320 SOUTH MAIN STREET  
JEFFERSON WI 53549-1799

PIN # 016-0514-1823-000  
BENFORD, BRIAN D  
BILL/PAGE NO. 2120

*Include This Stub With Your Payment*

OR PAY FULL AMOUNT OF: 92.64  
BY JANUARY 31,

Amount Enclosed \_\_\_\_\_

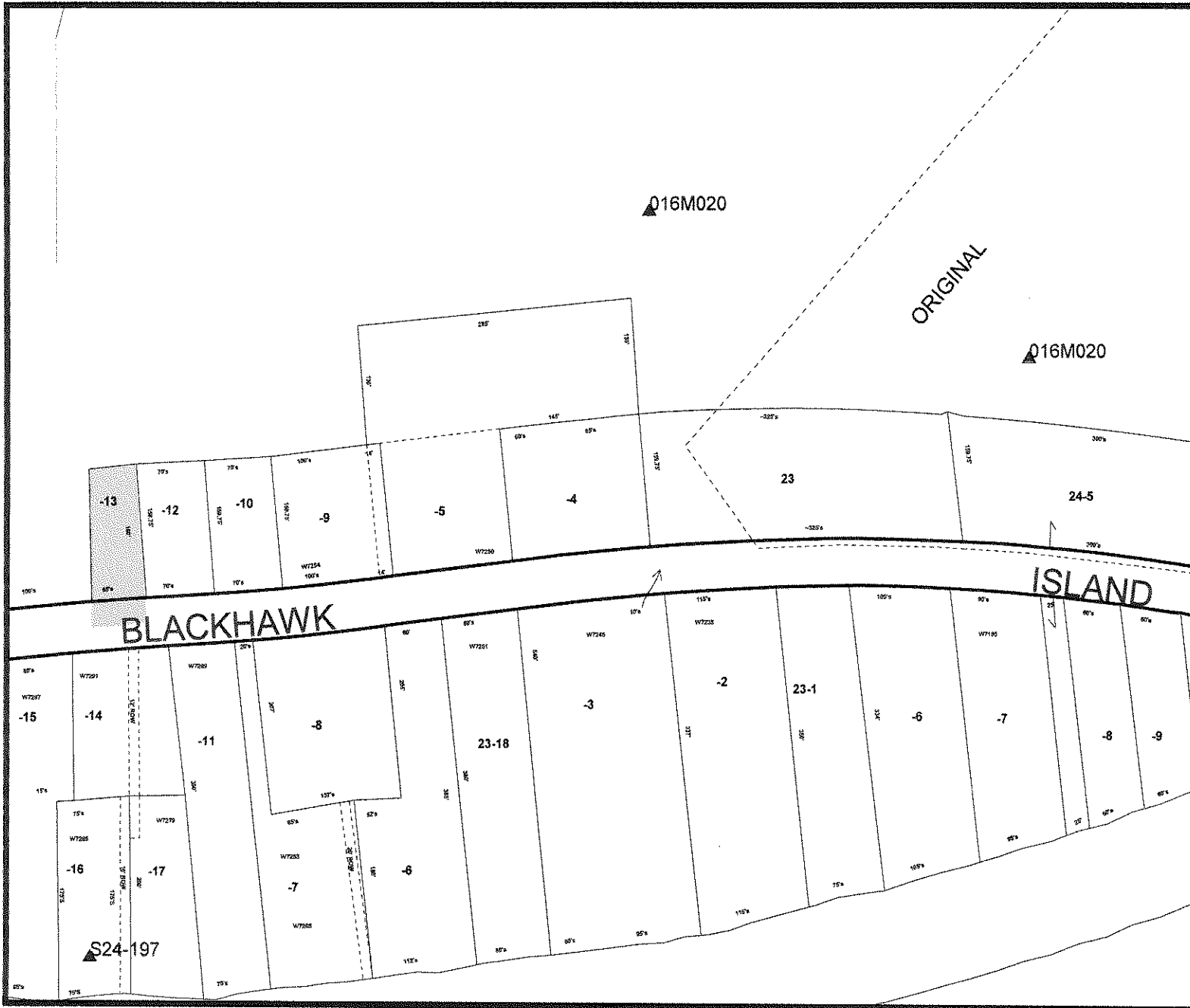
TO LOCAL TREASURER

Make Check Payable To:

TOWN OF KOSHKONONG  
DAN GEBAUER, TREASURER  
W5609 STAR SCHOOL RD  
FORT ATKINSON WI 53538

PIN # 016-0514-1823-000  
BENFORD, BRIAN D  
BILL/PAGE NO. 2120

*Include This Stub With Your Payment*



## Legend

- ▲ Surveys
- Streams Etc.
- Mcd Boundaries
- Parcels

016-0514-1823-013

Map Printed on: December 26, 2012

DISCLAIMER: This map is not a substitute for an actual field survey or onsite investigation. The accuracy of this map is limited to the quality of the records from which it was assembled. Other inherent inaccuracies occur during the compilation process. Jefferson County makes no warranty whatsoever concerning this information.



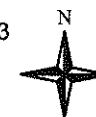
## Legend

- ▲ Surveys
- Streams Etc.
- Mcd Boundaries
- Highway Plats
- Parcels

016-0514-1823-013

0 200 400 Feet

Map Printed on: January 22, 2013



DISCLAIMER: This map is not a substitute for an actual field survey or onsite investigation. The accuracy of this map is limited to the quality of the records from which it was assembled. Other inherent inaccuracies occur during the compilation process. Jefferson County makes no warranty whatsoever concerning this information.

TOWN OF KOSHKONONG  
DAN GEBAUER, TREASURER  
W5609 STAR SCHOOL RD  
FORT ATKINSON WI 53538

# JEFFERSON COUNTY - STATE OF WISCONSIN PROPERTY TAX BILL FOR 2012 REAL ESTATE

KNAPP, ROSE  
CO # 016-1324-00000  
PIN # 016-0514-1823-013  
BILL/PAGE NO. 2133

**Important:** Be sure this description covers your property. Note that this description is for tax bill only and may not be a full legal description. See reverse side for important information.  
**Legal Description/Location of Property**

ROSE KNAPP

BEG 100FT E OF W/SEC/L, E65  
FT, N160FT, W TO PT 100FT E  
OF W/SEC/L, S TO POB  
.210 ACRES  
0710704

ROSE KNAPP  
C/O GORDON KNAPP  
801 WOODLAND DR  
WOODSTOCK IL 60098

Please inform treasurer of address changes.

ASSESSED VALUE LAND	ASSESSED VALUE IMPROVEMENTS	TOTAL ASSESSED VALUE	AVERAGE ASSMT RATIO	NET ASSESSED VALUE RATE (Does NOT reflect Credits)	NET PROPERTY TAX
4,800		4,800	101.04%	.016979251	81.50
ESTIMATED FAIR MARKET VALUE LAND	ESTIMATED FAIR MARKET VALUE IMPROVEMENTS	TOTAL ESTIMATED FAIR MARKET VALUE	<input checked="" type="checkbox"/> A star in this box means unpaid prior year taxes.	School taxes also reduced by school levy tax credit	LAKE DIST
4,800		4,800		8.69	40.00
TAXING JURISDICTION	2011 ESTIMATED STATE AIDS ALLOCATED TO TAX DISTRICT	2012 ESTIMATED STATE AIDS ALLOCATED TO TAX DISTRICT	2011 NET TAX	2012 NET TAX	% TAX CHANGE
STATE OF WISCONSIN			1.10	.81	26.3-
JEFFERSON COUNTY	203,091	200,250	28.79	22.27	22.7-
TOWN OF KOSHKONONG	190,345	190,375	7.03	5.50	21.8-
FORT ATKINSON SCH	3485,988	3673,776	59.07	44.29	25.0-
MATC	62,403	63,984	11.08	8.63	22.1-
<b>TOTALS</b>	3,941,827	4,128,385	107.08	81.50	23.9-
<b>FIRST DOLLAR CREDIT</b>					
<b>LOTTERY &amp; GAMING CREDIT</b>					
<b>NET TAX</b>			107.08	81.50	13.5
<b>TOTAL DUE: 121.50</b> <b>FOR FULL PAYMENT, PAY TO LOCAL</b> <b>TREASURER BY:</b> <b>JANUARY 31, 2013</b> <small>Warning: If not paid by due date, installment option is lost and total tax is delinquent subject to interest and if applicable penalty (See reverse)</small>					

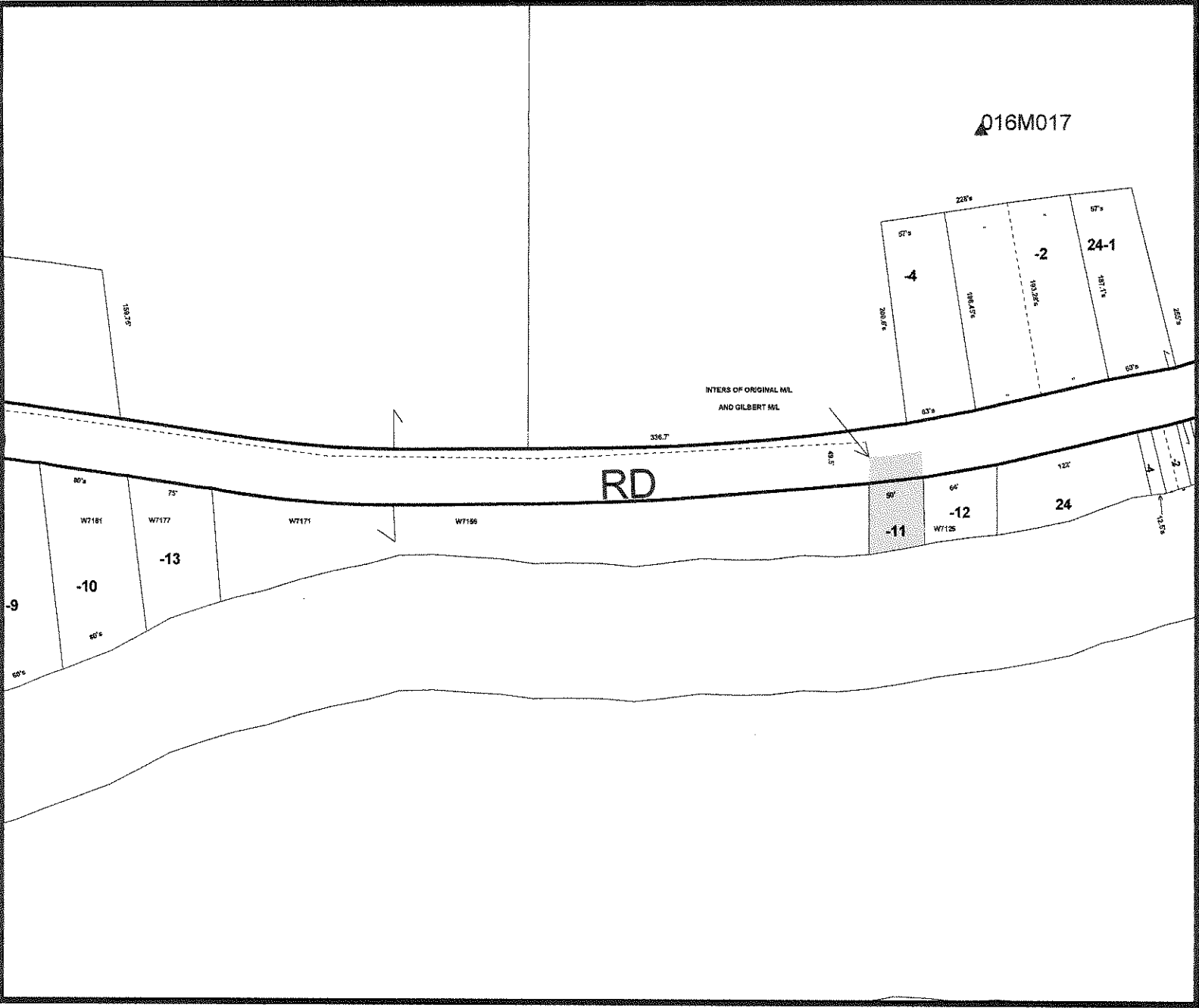
PAY 1ST INSTALLMENT OF: 121.50	AND PAY 2ND INSTALLMENT OF:	OR PAY FULL AMOUNT OF: 121.50
PAY 1ST INSTALLMENT OF: 121.50	AND PAY 2ND INSTALLMENT OF:	OR PAY FULL AMOUNT OF: 121.50
By JANUARY 31, 2013	BY JULY 31,	BY JANUARY 31,
Amount Enclosed _____	Amount Enclosed _____	Amount Enclosed _____
TO LOCAL TREASURER	TO COUNTY TREASURER	TO LOCAL TREASURER
Make Check Payable To:	Make Check Payable To:	Make Check Payable To:
TOWN OF KOSHKONONG	JOHN JENSEN	TOWN OF KOSHKONONG
DAN GEBAUER, TREASURER	JEFFERSON COUNTY TREASURER	DAN GEBAUER, TREASURER
W5609 STAR SCHOOL RD	320 SOUTH MAIN STREET	W5609 STAR SCHOOL RD
FORT ATKINSON WI 53538	JEFFERSON WI 53549-1799	FORT ATKINSON WI 53538
PIN # 016-0514-1823-013	PIN # 016-0514-1823-013	PIN # 016-0514-1823-013
KNAPP, ROSE	KNAPP, ROSE	KNAPP, ROSE
BILL/PAGE NO. 2133	BILL/PAGE NO. 2133	BILL/PAGE NO. 2133

Include This Stub With Your Payment

Include This Stub With Your Payment

Include This Stub With Your Payment





- Legend**
- ▲ Surveys
  - Streams Etc.
  - ▬ Mcd Boundaries
  - Parcels

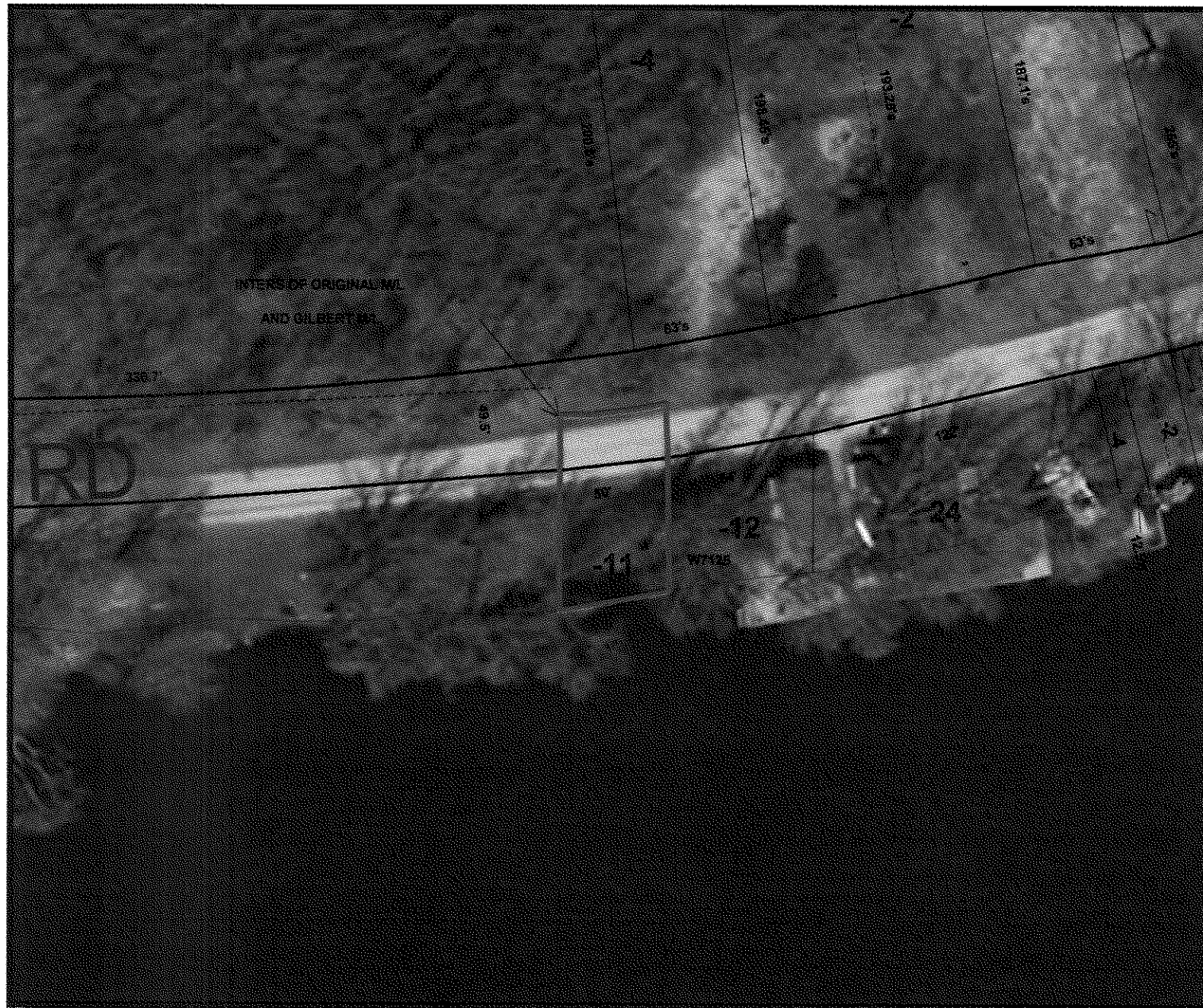
016-0514-1824-011

DISCLAIMER: This map is not a substitute for an actual field survey or onsite investigation. The accuracy of this map is limited to the quality of the records from which it was assembled. Other inherent inaccuracies occur during the compilation process. Jefferson County makes no warranty whatsoever concerning this information.

Map Printed on: December 26, 2012







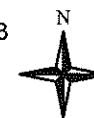
## Legend

- ▲ Surveys
- Streams Etc.
- Mcd Boundaries
- Highway Plats
- Parcels

016-0514-1824-011

0 100 200 Feet

Map Printed on: January 22, 2013



DISCLAIMER: This map is not a substitute for an actual field survey or onsite investigation. The accuracy of this map is limited to the quality of the records from which it was assembled. Other inherent inaccuracies occur during the compilation process. Jefferson County makes no warranty whatsoever concerning this information.

TOWN OF KOSHKONONG  
DAN GEBAUER, TREASURER  
W5609 STAR SCHOOL RD  
FORT ATKINSON WI 53538

**JEFFERSON COUNTY - STATE OF WISCONSIN  
PROPERTY TAX BILL FOR 2012  
REAL ESTATE**

FELTY, BERNETA  
CO # 016-1340-00000  
PIN # 016-0514-1824-011  
BILL/PAGE NO. 2149

**Important:** Be sure this description covers your property. Note that this description is for tax bill only and may not be a full legal description. See reverse side for important information.  
**Legal Description/Location of Property**

BERNETA FELTY

**BERNETA FELTY CHRISTIAN  
W7066 BLACKHAWK ISLAND  
FORT ATKINSON WI 53538**

BEG ON BLACKHAWK ISLAND RD  
AT INTR GILBERT MEANDER/L, &  
ORIG MEANDER/L ELY ON SD RD  
50FT, SLY TO RIV, WLY ON RIV  
50FT, NLY TO POB  
.090 ACRES  
0835844

Please inform treasurer of address changes.

ASSESSED VALUE LAND	ASSESSED VALUE IMPROVEMENTS	TOTAL ASSESSED VALUE	AVERAGE ASSMT RATIO	NET ASSESSED VALUE RATE (Does NOT reflect Credits)	NET PROPERTY TAX
8,900		8,900	101.04%	.016979251	151.12
ESTIMATED FAIR MARKET VALUE LAND	ESTIMATED FAIR MARKET VALUE IMPROVEMENTS	TOTAL ESTIMATED FAIR MARKET VALUE	<input checked="" type="checkbox"/> A star in this box means unpaid prior year taxes.	School taxes also reduced by school levy tax credit	LAKE DIST
8,800		8,800		16.11	40.00
TAXING JURISDICTION	2011 ESTIMATED STATE AIDS ALLOCATED TO TAX DISTRICT	2012 ESTIMATED STATE AIDS ALLOCATED TO TAX DISTRICT	2011 NET TAX	2012 NET TAX	% TAX CHANGE
STATE OF WISCONSIN			1.59	1.49	6.5-
JEFFERSON COUNTY	203,091	200,250	41.73	41.30	1.0-
TOWN OF KOSHKONONG	190,345	190,375	10.19	10.20	.1
FORT ATKINSON SCH	3485,988	3673,776	85.62	82.14	4.1-
MATC	62,403	63,984	16.05	15.99	.4-
<b>TOTALS</b>	3,941,827	4,128,385	155.19	151.12	2.6-
<b>FIRST DOLLAR CREDIT</b>					
<b>LOTTERY &amp; GAMING CREDIT</b>					
<b>NET TAX</b>			155.19	151.12	2.6-
<b>TOTAL DUE: 191.12</b> FOR FULL PAYMENT, PAY TO LOCAL TREASURER BY: <b>JANUARY 31, 2013</b> <small>Warning: If not paid by due dates, installment option is lost and total tax is delinquent subject to interest and if applicable penalty (See reverse)</small>					

PAY 1ST INSTALLMENT OF: 116.12 AND PAY 2ND INSTALLMENT OF: 75.00 OR PAY FULL AMOUNT OF: 191.12

PAY 1ST INSTALLMENT OF: 116.12 AND PAY 2ND INSTALLMENT OF: 75.00 OR PAY FULL AMOUNT OF: 191.12  
By JANUARY 31, 2013 BY JULY 31, 2013 BY JANUARY 31, 2013

Amount Enclosed \_\_\_\_\_ Amount Enclosed \_\_\_\_\_ Amount Enclosed \_\_\_\_\_

TO LOCAL TREASURER

TO COUNTY TREASURER

TO LOCAL TREASURER

Make Check Payable To:

Make Check Payable To:

Make Check Payable To:

TOWN OF KOSHKONONG  
DAN GEBAUER, TREASURER  
W5609 STAR SCHOOL RD  
FORT ATKINSON WI 53538

JOHN JENSEN  
JEFFERSON COUNTY TREASURER  
320 SOUTH MAIN STREET  
JEFFERSON WI 53549-1799

TOWN OF KOSHKONONG  
DAN GEBAUER, TREASURER  
W5609 STAR SCHOOL RD  
FORT ATKINSON WI 53538

PIN # 016-0514-1824-011  
FELTY, BERNETA  
BILL/PAGE NO. 2149

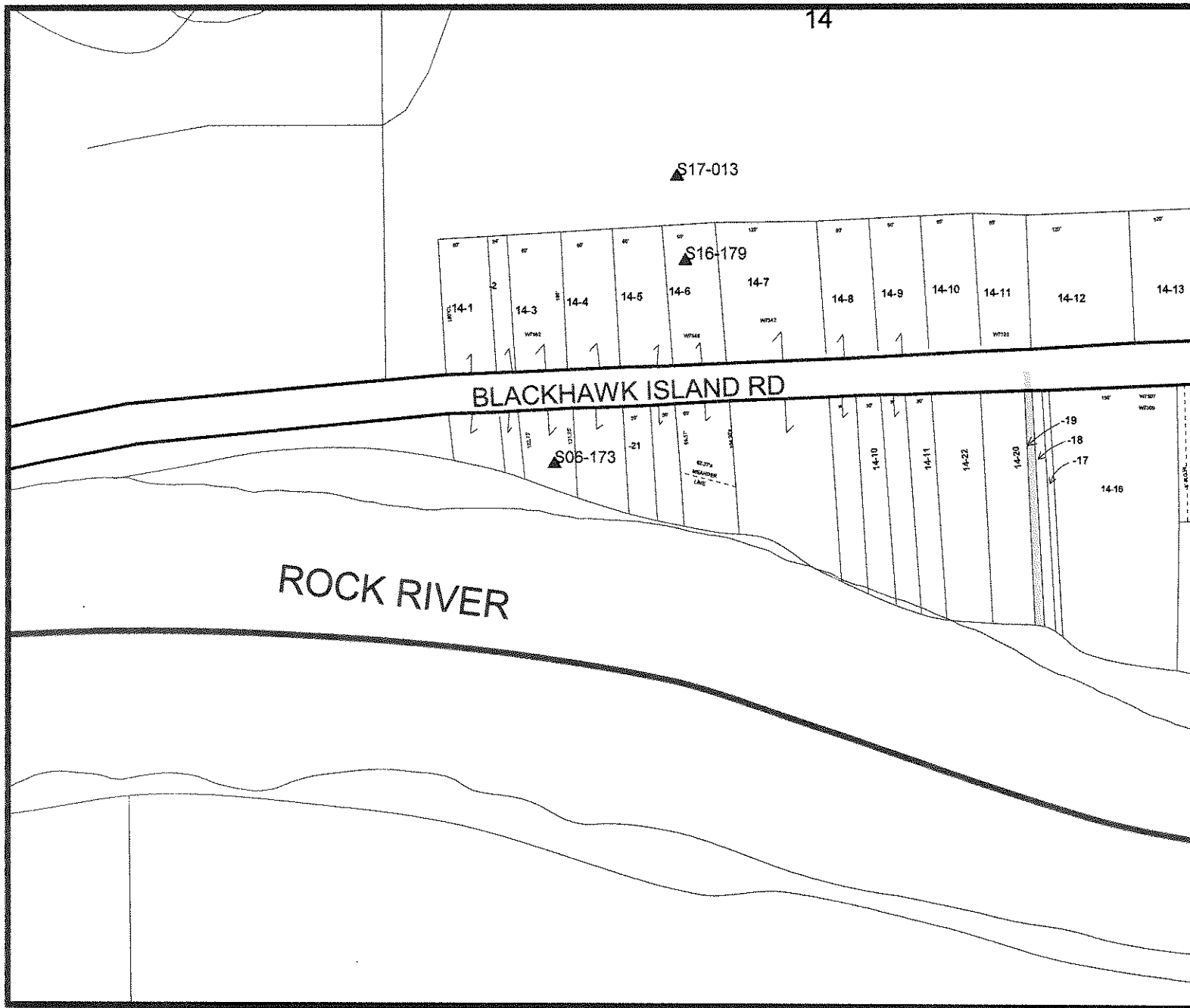
PIN # 016-0514-1824-011  
FELTY, BERNETA  
BILL/PAGE NO. 2149

PIN # 016-0514-1824-011  
FELTY, BERNETA  
BILL/PAGE NO. 2149

*Include This Stub With Your Payment*

*Include This Stub With Your Payment*

*Include This Stub With Your Payment*



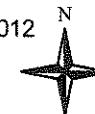
# Legend

- ▲ Surveys
- Streams Etc.
- Mcd Boundaries
- Parcels

028-0513-1314-019

Map Printed on: December 26, 2012

DISCLAIMER: This map is not a substitute for an actual field survey or onsite investigation. The accuracy of this map is limited to the quality of the records from which it was assembled. Other inherent inaccuracies occur during the compilation process. Jefferson County makes no warranty whatsoever concerning this information.





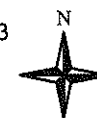
## Legend

- ▲ Surveys
- Streams Etc.
- Mcd Boundaries
- Highway Plats
- Parcels

028-0513-1314-019

0 300 600 Feet

Map Printed on: January 22, 2013



DISCLAIMER: This map is not a substitute for an actual field survey or onsite investigation. The accuracy of this map is limited to the quality of the records from which it was assembled. Other inherent inaccuracies occur during the compilation process. Jefferson County makes no warranty whatsoever concerning this information.

TOWN OF SUMNER  
DONNA SKAU, TREASURER  
W9225 STH 106  
EDGERTON WI 53534

**JEFFERSON COUNTY - STATE OF WISCONSIN  
PROPERTY TAX BILL FOR 2012  
REAL ESTATE**

KNAPP, ROSE  
CO # 028-0530-00000  
PIN # 028-0513-1314-019  
BILL/PAGE NO. 551

**Important:** Be sure this description covers your property. Note that this description is for tax bill only and may not be a full legal description. See reverse side for important information.

**Legal Description/Location of Property**

ROSE KNAPP

10FT STRIP FR HGY TO RIV,  
COM 245FT W OF E/S/L.  
.070 ACRES  
0446014/0710704

**ROSE KNAPP  
C/O GORDON KNAPP  
801 WOODLAND DR  
WOODSTOCK IL 60098**

Please inform treasurer of address changes.

ASSESSED VALUE LAND	ASSESSED VALUE IMPROVEMENTS	TOTAL ASSESSED VALUE	AVERAGE ASSMT RATIO	NET ASSESSED VALUE RATE (Does NOT reflect Credits)	NET PROPERTY TAX
400		400	98.90%	.018151178	7.26
ESTIMATED FAIR MARKET VALUE LAND	ESTIMATED FAIR MARKET VALUE IMPROVEMENTS	TOTAL ESTIMATED FAIR MARKET VALUE	<input checked="" type="checkbox"/> A star in this box means unpaid prior year taxes.	School taxes also reduced by school levy tax credit	LAKE DIST
400		400		.70	40.00
TAXING JURISDICTION	2011 ESTIMATED STATE AIDS ALLOCATED TO TAX DISTRICT	2012 ESTIMATED STATE AIDS ALLOCATED TO TAX DISTRICT	2011 NET TAX	2012 NET TAX	% TAX CHANGE
STATE OF WISCONSIN			.08	.07	11.6-
JEFFERSON COUNTY	66,780	69,211	2.07	1.90	8.4-
TOWN OF SUMNER	64,172	64,172	.80	.71	11.5-
FORT ATKINSON SCH	741,600	821,447	4.25	3.85	9.5-
MATC	20,519	22,114	.80	.73	8.5-
<b>TOTALS</b>	893,071	976,944	8.01	7.26	9.4-
<b>FIRST DOLLAR CREDIT</b>					
<b>LOTTERY &amp; GAMING CREDIT</b>					
<b>NET TAX</b>			8.01	7.26	490.0
<b>TOTAL DUE: 47.26</b> <b>FOR FULL PAYMENT, PAY TO LOCAL</b> <b>TREASURER BY:</b> <b>JANUARY 31, 2013</b> <small>Warning: If not paid by due dates, installment option is lost and total tax is delinquent subject to interest and if applicable penalty (See reverse)</small>					

PAY 1ST INSTALLMENT OF: 47.26 AND PAY 2ND INSTALLMENT OF: OR PAY FULL AMOUNT OF: 47.26

PAY 1ST INSTALLMENT OF: 47.26  
By JANUARY 31, 2013

Amount Enclosed \_\_\_\_\_

TO LOCAL TREASURER

Make Check Payable To:

TOWN OF SUMNER  
DONNA SKAU, TREASURER  
W9225 STH 106  
EDGERTON WI 53534

PIN # 028-0513-1314-019  
KNAPP, ROSE  
BILL/PAGE NO. 551

*Include This Stub With Your Payment*

AND PAY 2ND INSTALLMENT OF:  
BY JULY 31,

Amount Enclosed \_\_\_\_\_

TO COUNTY TREASURER

Make Check Payable To:

JOHN JENSEN  
JEFFERSON COUNTY TREASURER  
320 SOUTH MAIN STREET  
JEFFERSON WI 53549-1799

PIN # 028-0513-1314-019  
KNAPP, ROSE  
BILL/PAGE NO. 551

*Include This Stub With Your Payment*

OR PAY FULL AMOUNT OF: 47.26  
BY JANUARY 31,

Amount Enclosed \_\_\_\_\_

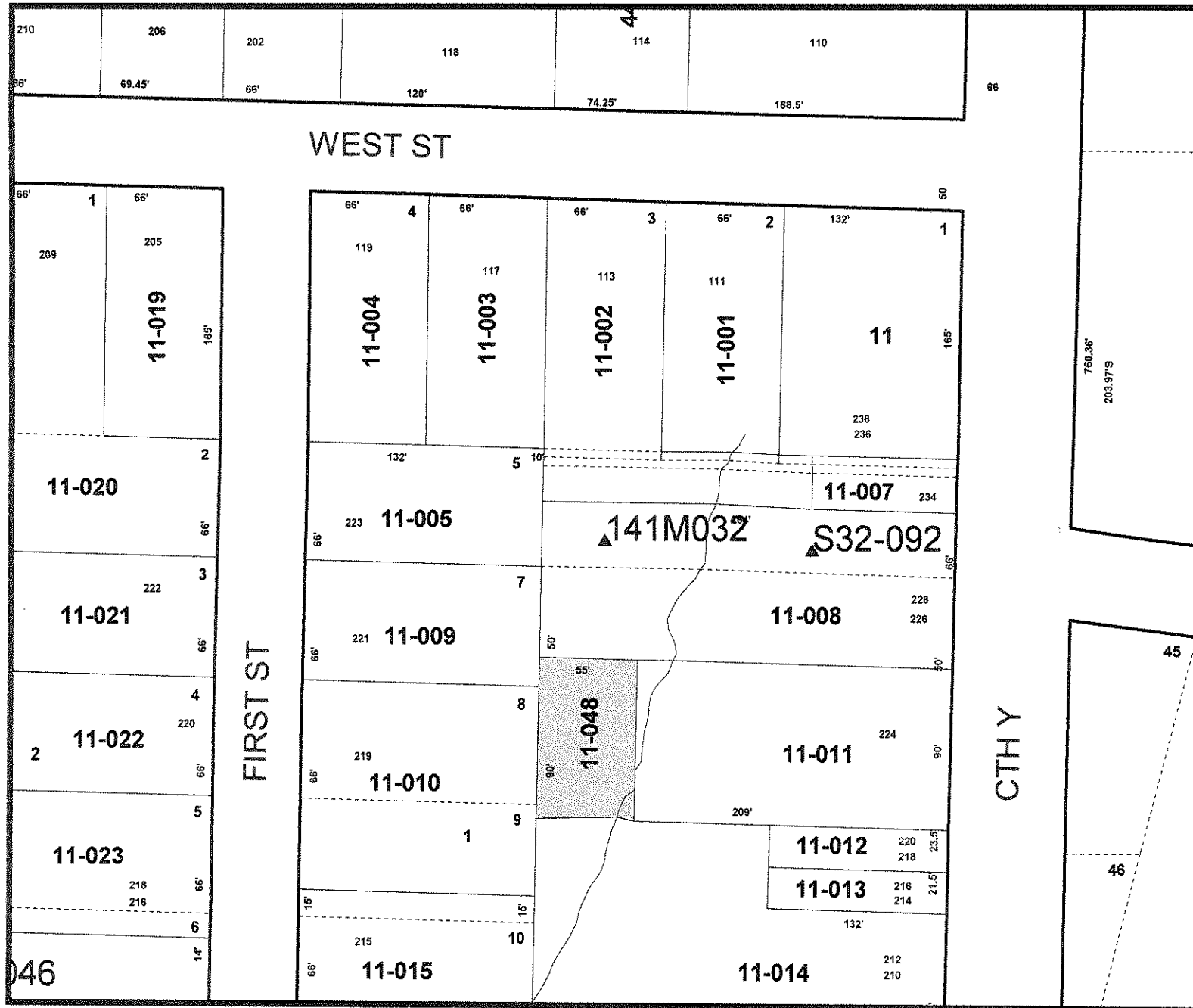
TO LOCAL TREASURER

Make Check Payable To:

TOWN OF SUMNER  
DONNA SKAU, TREASURER  
W9225 STH 106  
EDGERTON WI 53534

PIN # 028-0513-1314-019  
KNAPP, ROSE  
BILL/PAGE NO. 551

*Include This Stub With Your Payment*



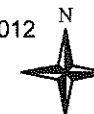
# Legend

- ▲ Surveys
- Streams Etc.
- McD Boundaries
- Parcels

141-0714-1311-048

0 200 400 Feet

Map Printed on: December 26, 2012



DISCLAIMER: This map is not a substitute for an actual field survey or onsite investigation. The accuracy of this map is limited to the quality of the records from which it was assembled. Other inherent inaccuracies occur during the compilation process. Jefferson County makes no warranty whatsoever concerning this information.





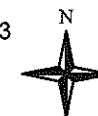
# Legend

- ▲ Surveys
- Streams Etc.
- Mcd Boundaries
- Highway Plats
- Parcels

141-0714-1311-048

0 100 200 Feet

Map Printed on: January 22, 2013



DISCLAIMER: This map is not a substitute for an actual field survey or onsite investigation. The accuracy of this map is limited to the quality of the records from which it was assembled. Other inherent inaccuracies occur during the compilation process. Jefferson County makes no warranty whatsoever concerning this information.

VIL OF JOHNSON CREEK  
JOAN DYKSTRA, TREASURER  
125 DEPOT ST  
PO BOX 238  
JOHNSON CREEK WI 53038-0238

**JEFFERSON COUNTY - STATE OF WISCONSIN  
PROPERTY TAX BILL FOR 2012  
REAL ESTATE**

WOJCIUK, STAN  
CO # 141-0159-01000  
PIN # 141-0714-1311-048  
BILL/PAGE NO. 324

**Important:** Be sure this description covers your property. Note that this description is for tax bill only and may not be a full legal description. See reverse side for important information.

**Legal Description/Location of Property**

**STAN WOJCIUK  
SHARON WOJCIUK  
1061 PERRY ST  
WATERTOWN WI 53098**

STAN WOJCIUK  
SHARON WOJCIUK

BEG 50FT S OF SE/C LOT 5,  
BLK 1, W L STIEHM'S SUB, E55  
FT, S90FT, W55FT, N90FT TO  
POB.  
0889591

Please inform treasurer of address changes.

ASSESSED VALUE LAND	ASSESSED VALUE IMPROVEMENTS	TOTAL ASSESSED VALUE	AVERAGE ASSMT RATIO	NET ASSESSED VALUE RATE (Does NOT reflect Credits)	NET PROPERTY TAX
2,000		2,000	98.96%	.021934108	43.87
ESTIMATED FAIR MARKET VALUE LAND	ESTIMATED FAIR MARKET VALUE IMPROVEMENTS	TOTAL ESTIMATED FAIR MARKET VALUE	<input checked="" type="checkbox"/> A star in this box means unpaid prior year taxes.	School taxes also reduced by school levy tax credit	
2,000		2,000		2.08	
TAXING JURISDICTION	2011 ESTIMATED STATE AIDS ALLOCATED TO TAX DISTRICT	2012 ESTIMATED STATE AIDS ALLOCATED TO TAX DISTRICT	2011 NET TAX	2012 NET TAX	% TAX CHANGE
STATE OF WISCONSIN			.35	.34	4.1-
JEFFERSON COUNTY	120,304	115,307	8.60	8.75	1.7
VIL OF JOHNSON CRE	504,489	483,468	10.70	12.21	14.1
JOHNSON CREEK SCH	2009,254	1987,266	18.59	18.90	1.6
MATC	36,965	36,843	3.57	3.67	2.8
<b>TOTALS</b>	2,671,012	2,622,884	41.83	43.87	4.9
<b>FIRST DOLLAR CREDIT</b>					
<b>LOTTERY &amp; GAMING CREDIT</b>					
<b>NET TAX</b>			41.83	43.87	4.9
<b>TOTAL DUE: 43.87</b> FOR FULL PAYMENT, PAY TO LOCAL TREASURER BY: <b>JANUARY 31, 2013</b> <small>Warning: If not paid by due dates, installment option is lost and total tax is delinquent subject to interest and if applicable penalty (See reverse)</small>					

PAY 1ST INSTALLMENT OF: 43.87 AND PAY 2ND INSTALLMENT OF: OR PAY FULL AMOUNT OF: 43.87

PAY 1ST INSTALLMENT OF: 43.87  
By JANUARY 31, 2013

Amount Enclosed \_\_\_\_\_

**TO LOCAL TREASURER**

Make Check Payable To:

VIL OF JOHNSON CREEK  
JOAN DYKSTRA, TREASURER  
125 DEPOT ST  
PO BOX 238  
JOHNSON CREEK WI 53038-0238  
PIN # 141-0714-1311-048  
WOJCIUK, STAN  
BILL/PAGE NO. 324

*Include This Stub With Your Payment*

AND PAY 2ND INSTALLMENT OF:  
BY JULY 31,

Amount Enclosed \_\_\_\_\_

**TO COUNTY TREASURER**

Make Check Payable To:

JOHN JENSEN  
JEFFERSON COUNTY TREASURER  
320 SOUTH MAIN STREET  
JEFFERSON WI 53549-1799  
PIN # 141-0714-1311-048  
WOJCIUK, STAN  
BILL/PAGE NO. 324

*Include This Stub With Your Payment*

OR PAY FULL AMOUNT OF: 43.87  
BY JANUARY 31,

Amount Enclosed \_\_\_\_\_

**TO LOCAL TREASURER**

Make Check Payable To:

VIL OF JOHNSON CREEK  
JOAN DYKSTRA, TREASURER  
125 DEPOT ST  
PO BOX 238  
JOHNSON CREEK WI 53038-0238  
PIN # 141-0714-1311-048  
WOJCIUK, STAN  
BILL/PAGE NO. 324

*Include This Stub With Your Payment*





## Legend

- ▲ Surveys
- Streams Etc.
- ▬ Mcd Boundaries
- Parcels

181-0616-0341-017

Map Printed on: December 26, 2012

DISCLAIMER: This map is not a substitute for an actual field survey or onsite investigation. The accuracy of this map is limited to the quality of the records from which it was assembled. Other inherent inaccuracies occur during the compilation process. Jefferson County makes no warranty whatsoever concerning this information.



## Legend

- ▲ Surveys
- Streams Etc.
- Mcd Boundaries
- Parcels

181-0616-0341-017

0 100 200 Feet

Map Printed on: January 22, 2013



DISCLAIMER: This map is not a substitute for an actual field survey or onsite investigation. The accuracy of this map is limited to the quality of the records from which it was assembled. Other inherent inaccuracies occur during the compilation process. Jefferson County makes no warranty whatsoever concerning this information.

CLERK/TREASURER/ZONING AD  
DALE E HORTON  
PO BOX 6  
SULLIVAN WI 53178

**JEFFERSON COUNTY - STATE OF WISCONSIN  
PROPERTY TAX BILL FOR 2012  
REAL ESTATE**

CASSIDY, TOM P  
CO # 181-0257-02000  
PIN # 181-0616-0341-017  
BILL/PAGE NO. 286

**Important:** Be sure this description covers your property. Note that this description is for tax bill only and may not be a full legal description. See reverse side for important information.

**Legal Description/Location of Property**

**TOM P CASSIDY  
AMY L CASSIDY  
W299S1170 BRANDYBROOK RD  
WAUKESHA WI 53188-9450**

TOM P CASSIDY  
AMY L CASSIDY

BEG SE/C LOT 16, RAYMOND  
KRAMER SUB, N13DG04"W 82FT,  
N76DG58"E 100FT, S13DG04"E  
82FT, S76DG58"W 100FT TO  
POB.

.188 ACRES

Please inform treasurer of address changes.

ASSESSED VALUE LAND	ASSESSED VALUE IMPROVEMENTS	TOTAL ASSESSED VALUE	AVERAGE ASSMT RATIO	NET ASSESSED VALUE RATE (Does NOT reflect Credits)	NET PROPERTY TAX
6,100		6,100	109.59%	.020538214	125.28
ESTIMATED FAIR MARKET VALUE LAND	ESTIMATED FAIR MARKET VALUE IMPROVEMENTS	TOTAL ESTIMATED FAIR MARKET VALUE	<input checked="" type="checkbox"/> A star in this box means unpaid prior year taxes.	School taxes also reduced by school levy tax credit	
5,600		5,600		9.33	
TAXING JURISDICTION	2011 ESTIMATED STATE AIDS ALLOCATED TO TAX DISTRICT	2012 ESTIMATED STATE AIDS ALLOCATED TO TAX DISTRICT	2011 NET TAX	2012 NET TAX	% TAX CHANGE
STATE OF WISCONSIN			.96	.94	2.5-
JEFFERSON COUNTY	26,925	27,957	25.25	26.09	3.3
VILLAGE OF SULLIVA	80,800	85,328	35.71	35.74	.1
JEFFERSON SCH DIST	530,891	597,529	54.07	52.40	3.1-
MATC	8,273	8,933	9.72	10.11	4.1
<b>TOTALS</b>	646,889	719,747	125.72	125.28	.4-
<b>FIRST DOLLAR CREDIT</b>					
<b>LOTTERY &amp; GAMING CREDIT</b>					
<b>NET TAX</b>			125.72	125.28	.4-
<b>TOTAL DUE: 125.28</b> FOR FULL PAYMENT, PAY TO LOCAL TREASURER BY: <b>JANUARY 31, 2013</b> Warning: If not paid by due dates, installment option is lost and total tax is delinquent subject to interest and if applicable penalty (See reverse)					

PAY 1ST INSTALLMENT OF: 63.28 AND PAY 2ND INSTALLMENT OF: 62.00 OR PAY FULL AMOUNT OF: 125.28

PAY 1ST INSTALLMENT OF: 63.28 AND PAY 2ND INSTALLMENT OF: 62.00 OR PAY FULL AMOUNT OF: 125.28  
By JANUARY 31, 2013 BY JULY 31, 2013 BY JANUARY 31, 2013

Amount Enclosed \_\_\_\_\_ Amount Enclosed \_\_\_\_\_ Amount Enclosed \_\_\_\_\_

**TO LOCAL TREASURER**

Make Check Payable To:

CLERK/TREASURER/ZONING AD  
DALE E HORTON  
PO BOX 6  
SULLIVAN WI 53178

PIN # 181-0616-0341-017  
CASSIDY, TOM P  
BILL/PAGE NO. 286

**TO COUNTY TREASURER**

Make Check Payable To:

JOHN JENSEN  
JEFFERSON COUNTY TREASURER  
320 SOUTH MAIN STREET  
JEFFERSON WI 53549-1799

PIN # 181-0616-0341-017  
CASSIDY, TOM P  
BILL/PAGE NO. 286

**TO LOCAL TREASURER**

Make Check Payable To:

CLERK/TREASURER/ZONING AD  
DALE E HORTON  
PO BOX 6  
SULLIVAN WI 53178

PIN # 181-0616-0341-017  
CASSIDY, TOM P  
BILL/PAGE NO. 286

*Include This Stub With Your Payment*

*Include This Stub With Your Payment*

*Include This Stub With Your Payment*







Legend

- ▲ Surveys
- Streams Etc.
- Mcd Boundaries
- Parcels

241-0614-0232-050

0 200 400 Feet

Map Printed on: January 22, 2013



DISCLAIMER: This map is not a substitute for an actual field survey or onsite investigation. The accuracy of this map is limited to the quality of the records from which it was assembled. Other inherent inaccuracies occur during the compilation process. Jefferson County makes no warranty whatsoever concerning this information.

CITY OF JEFFERSON  
TANYA N P STEWART, TREAS  
317 S MAIN ST  
JEFFERSON WI 53549-1772

**JEFFERSON COUNTY - STATE OF WISCONSIN  
PROPERTY TAX BILL FOR 2012  
REAL ESTATE**

JOHNSON, BRIAN S  
CO # 241-0270-50000  
PIN # 241-0614-0232-050  
BILL/PAGE NO. 445

**Important:** Be sure this description covers your property. Note that this description is for tax bill only and may not be a full legal description. See reverse side for important information.  
**Legal Description/Location of Property**

BRIAN S JOHNSON  
OUTLOT 1, CSM 4096-20-70.  
.150 ACRES  
1043989/1054155

**BRIAN S JOHNSON  
670 W LINDEN DR  
JEFFERSON WI 53549-1424**

Please inform treasurer of address changes.

ASSESSED VALUE LAND	ASSESSED VALUE IMPROVEMENTS	TOTAL ASSESSED VALUE	AVERAGE ASSMT RATIO	NET ASSESSED VALUE RATE (Does NOT reflect Credits)	NET PROPERTY TAX
100		100	99.01%	.024272864	2.43
ESTIMATED FAIR MARKET VALUE LAND	ESTIMATED FAIR MARKET VALUE IMPROVEMENTS	TOTAL ESTIMATED FAIR MARKET VALUE	<input checked="" type="checkbox"/> A star in this box means unpaid prior year taxes.	School taxes also reduced by school levy tax credit	
100		100		.16	
TAXING JURISDICTION	2011 ESTIMATED STATE AIDS ALLOCATED TO TAX DISTRICT	2012 ESTIMATED STATE AIDS ALLOCATED TO TAX DISTRICT	2011 NET TAX	2012 NET TAX	% TAX CHANGE
STATE OF WISCONSIN			.02	.02	17.1
JEFFERSON COUNTY	282,945	283,723	.41	.44	6.1
CITY OF JEFFERSON	1044,428	1048,876	.76	.84	10.5
JEFFERSON SCH DIST	5578,826	6063,884	.96	.95	1.7-
MATC	86,940	90,655	.17	.18	4.6
<b>TOTALS</b>	6,993,139	7,487,138	2.33	2.43	4.3
<b>FIRST DOLLAR CREDIT</b>					
<b>LOTTERY &amp; GAMING CREDIT</b>					
<b>NET TAX</b>			2.33	2.43	4.3
<b>TOTAL DUE: 2.43</b> FOR FULL PAYMENT, PAY TO LOCAL TREASURER BY: <b>JANUARY 31, 2013</b> <small>Warning: If not paid by due dates, installment option is lost and total tax is delinquent subject to interest and if applicable penalty (See reverse)</small>					

PAY 1ST INSTALLMENT OF: 2.43 AND PAY 2ND INSTALLMENT OF: OR PAY FULL AMOUNT OF: 2.43

PAY 1ST INSTALLMENT OF: 2.43 AND PAY 2ND INSTALLMENT OF: OR PAY FULL AMOUNT OF: 2.43  
By JANUARY 31, 2013 BY JULY 31, BY JANUARY 31,

Amount Enclosed Amount Enclosed Amount Enclosed

TO LOCAL TREASURER

TO COUNTY TREASURER

TO LOCAL TREASURER

Make Check Payable To:

Make Check Payable To:

Make Check Payable To:

CITY OF JEFFERSON  
TANYA N P STEWART, TREAS  
317 S MAIN ST  
JEFFERSON WI 53549-1772

JOHN JENSEN  
JEFFERSON COUNTY TREASURER  
320 SOUTH MAIN STREET  
JEFFERSON WI 53549-1799

CITY OF JEFFERSON  
TANYA N P STEWART, TREAS  
317 S MAIN ST  
JEFFERSON WI 53549-1772

PIN # 241-0614-0232-050  
JOHNSON, BRIAN S  
BILL/PAGE NO. 445

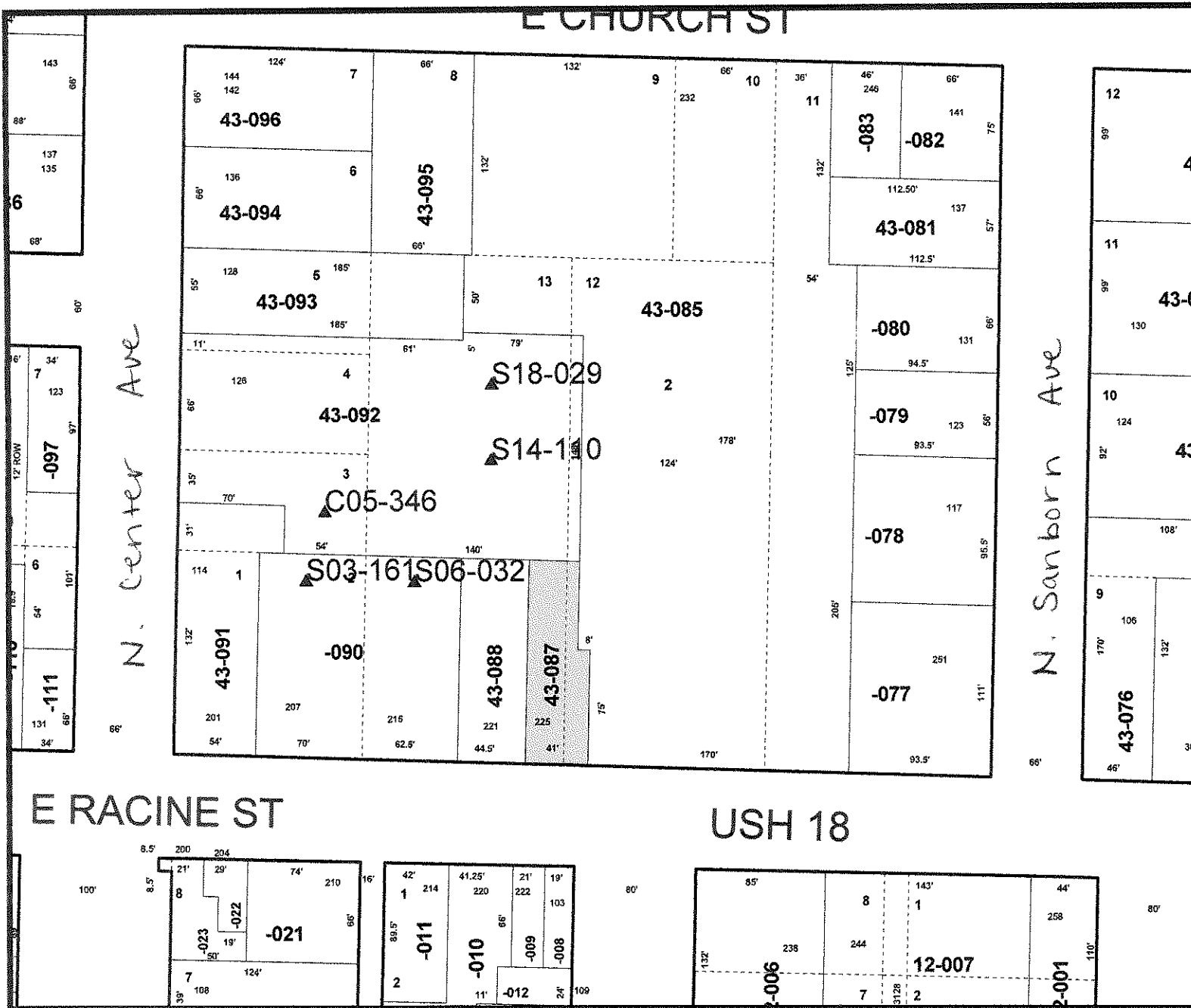
PIN # 241-0614-0232-050  
JOHNSON, BRIAN S  
BILL/PAGE NO. 445

PIN # 241-0614-0232-050  
JOHNSON, BRIAN S  
BILL/PAGE NO. 445

*Include This Stub With Your Payment*

*Include This Stub With Your Payment*

*Include This Stub With Your Payment*



# Legend

- ▲ Surveys
- Streams Etc.
- Mcd Boundaries
- Parcels

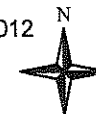
241-0614-0243-087

E RACINE ST

USH 18

0 200 400 Feet

Map Printed on: December 26, 2012

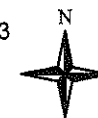


DISCLAIMER: This map is not a substitute for an actual field survey or onsite investigation. The accuracy of this map is limited to the quality of the records from which it was assembled. Other inherent inaccuracies occur during the compilation process. Jefferson County makes no warranty whatsoever concerning this information.

▲ Surveys  
— Streams Etc.  
▬ Mcd Boundaries  
Parcels

241-0614-0243-087

Map Printed on: January 22, 2013



DISCLAIMER: This map is not a substitute for an actual field survey or onsite investigation. The accuracy of this map is limited to the quality of the records from which it was assembled. Other inherent inaccuracies occur during the compilation process. Jefferson County makes no warranty whatsoever concerning this information.



CITY OF JEFFERSON  
TANYA N P STEWART, TREAS  
317 S MAIN ST  
JEFFERSON WI 53549-1772

# JEFFERSON COUNTY - STATE OF WISCONSIN PROPERTY TAX BILL FOR 2012 REAL ESTATE

SIERRA, JUAN JORGE  
CO # 241-0631-00000  
PIN # 241-0614-0243-087  
BILL/PAGE NO. 821

**Important:** Be sure this description covers your property. Note that this description is for tax bill only and may not be a full legal description. See reverse side for important information.

## Legal Description/Location of Property

JUAN JORGE SIERRA  
225 E RACINE ST  
JEFFERSON  
BEG 116FT W OF SE/C LOT 12,  
BLK 2, SANBORN'S ADD, N75FT,  
W8FT, N57FT, W33FT, S132FT,  
E41FT TO POB.  
.113 ACRES  
1036276

**JUAN JORGE SIERRA**  
**225 E RACINE ST**  
**JEFFERSON WI 53549**

Please inform treasurer of address changes.

ASSESSED VALUE LAND	ASSESSED VALUE IMPROVEMENTS	TOTAL ASSESSED VALUE	AVERAGE ASSMT RATIO	NET ASSESSED VALUE RATE (Does NOT reflect Credits)	NET PROPERTY TAX
18,200	97,300	115,500	99.01%	.024272864	2,730.33
ESTIMATED FAIR MARKET VALUE LAND	ESTIMATED FAIR MARKET VALUE IMPROVEMENTS	TOTAL ESTIMATED FAIR MARKET VALUE	<input checked="" type="checkbox"/> A star in this box means unpaid prior year taxes.	School taxes also reduced by school levy tax credit	
18,400	98,300	116,700		193.58	
TAXING JURISDICTION	2011 ESTIMATED STATE AIDS ALLOCATED TO TAX DISTRICT	2012 ESTIMATED STATE AIDS ALLOCATED TO TAX DISTRICT	2011 NET TAX	2012 NET TAX	% TAX CHANGE
STATE OF WISCONSIN			20.88	19.78	5.3-
JEFFERSON COUNTY	282,945	283,723	506.69	503.91	.5-
CITY OF JEFFERSON	1044,428	1048,876	928.86	969.38	4.4
JEFFERSON SCH DIST	5578,826	6063,884	1,177.81	1,098.84	6.7-
MATC	86,940	90,655	210.30	211.61	.6
<b>TOTALS</b>	6,993,139	7,487,138	2,844.54	2,803.52	1.4-
<b>FIRST DOLLAR CREDIT</b>			75.26	73.19	2.8-
<b>LOTTERY &amp; GAMING CREDIT</b>					
<b>NET TAX</b>			2,769.28	2,730.33	1.4-
<b>TOTAL DUE: 2,730.33</b> <b>FOR FULL PAYMENT, PAY TO LOCAL</b> <b>TREASURER BY:</b> <b>JANUARY 31, 2013</b> Warning: If not paid by due dates, installment option is lost and total tax is delinquent subject to interest and if applicable penalty (See reverse)					

PAY 1ST INSTALLMENT OF: 1,365.33 AND PAY 2ND INSTALLMENT OF: 1,365.00 OR PAY FULL AMOUNT OF: 2,730.33

PAY 1ST INSTALLMENT OF: 1,365.33 AND PAY 2ND INSTALLMENT OF: 1,365.00 OR PAY FULL AMOUNT OF: 2,730.33  
By JANUARY 31, 2013 BY JULY 31, 2013 BY JANUARY 31, 2013

Amount Enclosed \_\_\_\_\_ Amount Enclosed \_\_\_\_\_ Amount Enclosed \_\_\_\_\_

TO LOCAL TREASURER

TO COUNTY TREASURER

TO LOCAL TREASURER

Make Check Payable To:

Make Check Payable To:

Make Check Payable To:

CITY OF JEFFERSON  
TANYA N P STEWART, TREAS  
317 S MAIN ST  
JEFFERSON WI 53549-1772

JOHN JENSEN  
JEFFERSON COUNTY TREASURER  
320 SOUTH MAIN STREET  
JEFFERSON WI 53549-1799

CITY OF JEFFERSON  
TANYA N P STEWART, TREAS  
317 S MAIN ST  
JEFFERSON WI 53549-1772

PIN # 241-0614-0243-087  
SIERRA, JUAN JORGE  
BILL/PAGE NO. 821

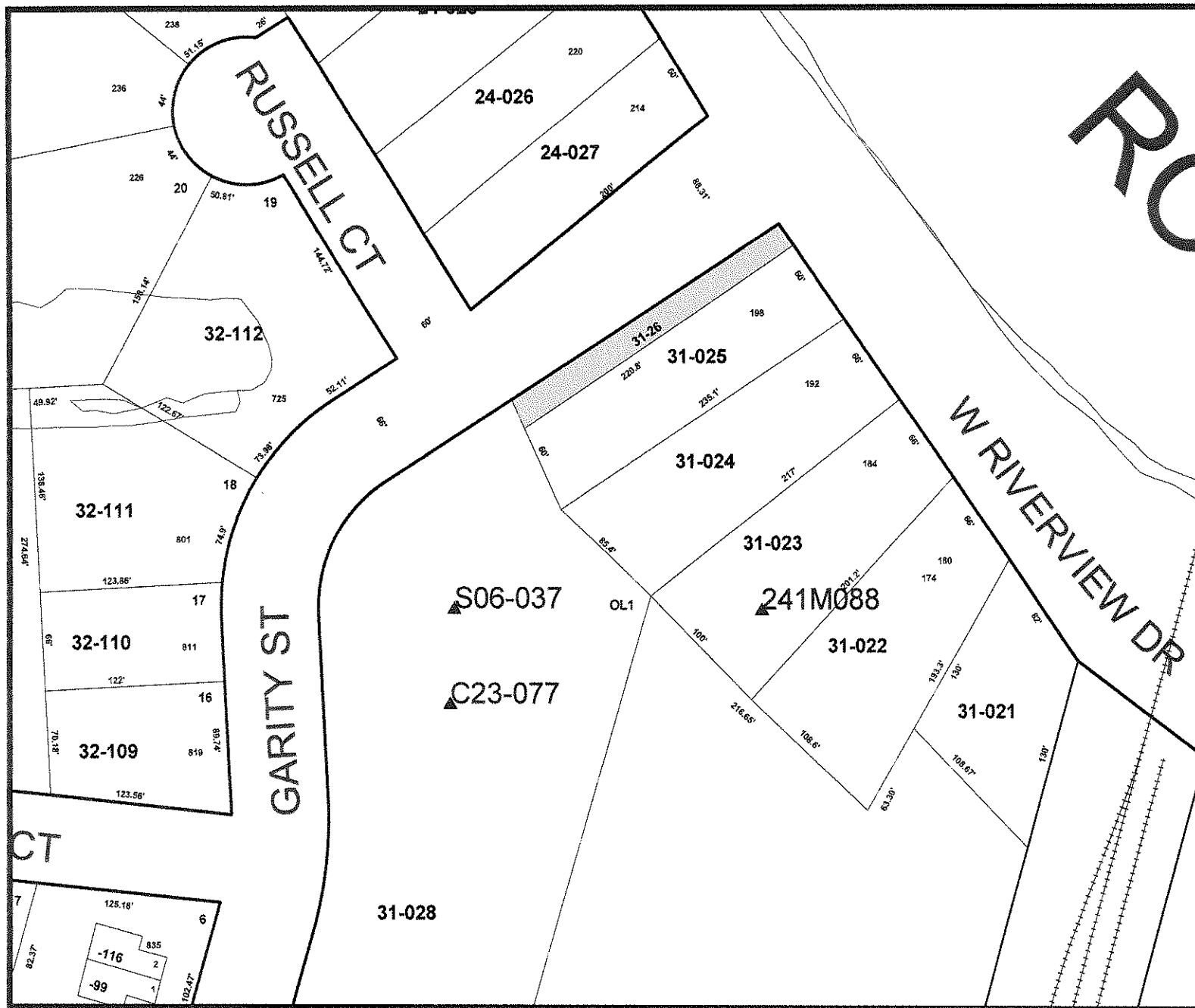
PIN # 241-0614-0243-087  
SIERRA, JUAN JORGE  
BILL/PAGE NO. 821

PIN # 241-0614-0243-087  
SIERRA, JUAN JORGE  
BILL/PAGE NO. 821

*Include This Stub With Your Payment*

*Include This Stub With Your Payment*

*Include This Stub With Your Payment*



# Legend

- ▲ Surveys
- Streams Etc.
- Mcd Boundaries
- Parcels

241-0614-1131-026

Map Printed on: December 26, 2012

DISCLAIMER: This map is not a substitute for an actual field survey or onsite investigation. The accuracy of this map is limited to the quality of the records from which it was assembled. Other inherent inaccuracies occur during the compilation process. Jefferson County makes no warranty whatsoever concerning this information.



## Legend

- ▲ Surveys
- Streams Etc.
- Mcd Boundaries
- Parcels

241-0614-1131-026

0 100 200 Feet

Map Printed on: January 22, 2013



DISCLAIMER: This map is not a substitute for an actual field survey or onsite investigation. The accuracy of this map is limited to the quality of the records from which it was assembled. Other inherent inaccuracies occur during the compilation process. Jefferson County makes no warranty whatsoever concerning this information.

CITY OF JEFFERSON  
TANYA N P STEWART, TREAS  
317 S MAIN ST  
JEFFERSON WI 53549-1772

**JEFFERSON COUNTY - STATE OF WISCONSIN  
PROPERTY TAX BILL FOR 2012  
REAL ESTATE**

RORGE, DAVID J  
CO # 241-1649-00000  
PIN # 241-0614-1131-026  
BILL/PAGE NO. 2000

**Important:** Be sure this description covers your property. Note that this description is for tax bill only and may not be a full legal description. See reverse side for important information.  
**Legal Description/Location of Property**

**DAVID J RORGE  
3402 LEVY LN  
LA CROSSE WI 54601-6609**

DAVID J RORGE  
BEG ON RIVERVIEW DR, 970.50FT  
SE OF SE/L OF WIS AV, S54DG  
40°W 216.50FT, S25DG1'E60FT,  
N54DG37'E 223.60FT, N34DG10'  
W60FT TO POB. EX PT IN THE  
BRICKYARD.  
.096 ACRES  
1165389

Please inform treasurer of address changes.

ASSESSED VALUE LAND	ASSESSED VALUE IMPROVEMENTS	TOTAL ASSESSED VALUE	AVERAGE ASSMT RATIO	NET ASSESSED VALUE RATE (Does NOT reflect Credits)	NET PROPERTY TAX
1,000		1,000	99.01%	.024272864	24.27
ESTIMATED FAIR MARKET VALUE LAND	ESTIMATED FAIR MARKET VALUE IMPROVEMENTS	TOTAL ESTIMATED FAIR MARKET VALUE	<input checked="" type="checkbox"/> A star in this box means unpaid prior year taxes.	School taxes also reduced by school levy tax credit	
1,000		1,000		1.68	
TAXING JURISDICTION	2011 ESTIMATED STATE AIDS ALLOCATED TO TAX DISTRICT	2012 ESTIMATED STATE AIDS ALLOCATED TO TAX DISTRICT	2011 NET TAX	2012 NET TAX	% TAX CHANGE
STATE OF WISCONSIN			2.05	.17	91.7-
JEFFERSON COUNTY	282,945	283,723	49.76	4.36	91.2-
CITY OF JEFFERSON	1044,428	1048,876	91.21	8.39	90.8-
JEFFERSON SCH DIST	5578,826	6063,884	115.65	9.52	91.8-
MATC	86,940	90,655	20.65	1.83	91.1-
<b>TOTALS</b>	6,993,139	7,487,138	279.33	24.27	91.3-
<b>FIRST DOLLAR CREDIT</b>					
<b>LOTTERY &amp; GAMING CREDIT</b>					
<b>NET TAX</b>			279.33	24.27	91.3-
<b>TOTAL DUE: 24.27</b> FOR FULL PAYMENT, PAY TO LOCAL TREASURER BY: <b>JANUARY 31, 2013</b> <small>Warning: If not paid by due dates, installment option is lost and total tax is delinquent subject to interest and if applicable penalty (See reverse)</small>					

PAY 1ST INSTALLMENT OF: 24.27 AND PAY 2ND INSTALLMENT OF: OR PAY FULL AMOUNT OF: 24.27

PAY 1ST INSTALLMENT OF: 24.27 By JANUARY 31, 2013 Amount Enclosed _____ TO LOCAL TREASURER Make Check Payable To: CITY OF JEFFERSON TANYA N P STEWART, TREAS 317 S MAIN ST JEFFERSON WI 53549-1772 PIN # 241-0614-1131-026 RORGE, DAVID J BILL/PAGE NO. 2000	AND PAY 2ND INSTALLMENT OF: By JULY 31, Amount Enclosed _____ TO COUNTY TREASURER Make Check Payable To: JOHN JENSEN JEFFERSON COUNTY TREASURER 320 SOUTH MAIN STREET JEFFERSON WI 53549-1799 PIN # 241-0614-1131-026 RORGE, DAVID J BILL/PAGE NO. 2000	OR PAY FULL AMOUNT OF: 24.27 By JANUARY 31, Amount Enclosed _____ TO LOCAL TREASURER Make Check Payable To: CITY OF JEFFERSON TANYA N P STEWART, TREAS 317 S MAIN ST JEFFERSON WI 53549-1772 PIN # 241-0614-1131-026 RORGE, DAVID J BILL/PAGE NO. 2000
---	--	---

Include This Stub With Your Payment

Include This Stub With Your Payment

Include This Stub With Your Payment

## Brian Lamers

---

**From:** Brian Udovich  
**Sent:** Thursday, January 24, 2013 11:49 AM  
**To:** Bill Kern; Phil Ristow; Brian Lamers  
**Cc:** Russ Cooper; Richard Jones; John Molinaro; Jim Mode; James Braugher; Jennifer Hanneman  
**Subject:** RE: 2012 Foreclosed Properties  
**Importance:** High

The only parcel that affects us is the one on CTH K. In terms of that parcel, it appears as if it includes land situated in the highway right-of-way. Therefore, this would be a perfect opportunity for us to obtain the right-of-way properly so we do not have to go through an acquisition down the line when a road improvement project is implemented. We would not want Edgewater parking in the right-of-way anyway. However, the land outside the right-of-way could possibly be used for that purpose, but that does not amount to much (usable) area especially adjacent to the water.

Brian M. Udovich, P.E.  
Highway Operations Manager  
Jefferson County Highway Department  
141 West Woolcock Street  
Jefferson, WI 53549  
Office: (920) 674-7273  
Cell: (920) 723-7273  
Fax: (920) 674-7446  
[brianu@jeffersoncountywi.gov](mailto:brianu@jeffersoncountywi.gov)  
<http://www.jeffersoncountywi.gov>

\*NOTE: Permit applications are now completed online at <http://www.jefferson.wi.roway.net/>.

---

**From:** Bill Kern  
**Sent:** Thursday, January 24, 2013 10:58 AM  
**To:** Brian Udovich  
**Cc:** Russ Cooper  
**Subject:** FW: 2012 Foreclosed Properties

Brian,  
See Phil R comments below, these are tax foreclosure parcels the county now owns and is looking at selling. Do we have any highway needs to keep these parcels, especially the CTH K one he mentions.

Bill

---

**From:** Phil Ristow  
**Sent:** Thursday, January 24, 2013 9:52 AM  
**To:** Bill Kern  
**Subject:** FW: 2012 Foreclosed Properties

Bill:

The attachment is property titled to the county from recent tax foreclosure. The second one down the page is on K south of the old Edgewater restaurant. Lots of it looks like right of way. The people who bought the Edgewater are interested in buying that piece for parking. I don't know what our right of way is along that road, fee vs. easement. Please look at that to see if sale of some (or all, subject to ROW) of that parcel is an issue for your department. As well, scroll through the other ones to see if anything has any relevance to Highway, so we can act accordingly on sale. This will be on a Finance agenda mid February. Thanks.

---

**From:** Brian Lamers  
**Sent:** Thursday, January 24, 2013 8:57 AM  
**To:** Richard Jones; John Molinaro; Jim Mode; James Braugher; Jennifer Hanneman  
**Cc:** Phil Ristow  
**Subject:** 2012 Foreclosed Properties

Good Morning,

Attached is information on 2012 foreclosed properties that Phil put together. This will be an agenda item on the next Finance Committee meeting and since there is so much information to go through I wanted to get a copy out early for review.

If you have any questions let me know.

Thanks

*Brian L. Lamers CPA  
Finance Director  
Jefferson County, Wisconsin  
(920)674-7142*

---

**From:** [Konica County Clerk@jeffersoncountywi.gov](mailto:Konica_County_Clerk@jeffersoncountywi.gov) [[mailto:Konica County Clerk@jeffersoncountywi.gov](mailto:Konica_County_Clerk@jeffersoncountywi.gov)]  
**Sent:** Wednesday, January 23, 2013 2:41 PM  
**To:** Brian Lamers  
**Subject:** Message from KMBT\_C552

<< File: SKMBT\_C55213012315400.pdf >>



Jefferson County  
2014 Budget Calendar

Description	Date	Regular Finance	Budget Related
Employee reclassification letter sent out by Human Resources	Monday, March 25, 2013		x
New Position Request Letter sent to Department Heads by HR	Monday, March 25, 2013		x
Employee reclassification requests due to Department Heads by	Tuesday, April 2, 2013		x
Employee reclassification names due to HR from Departments by	Friday, April 5, 2013		x
New Position requests due from Departments to HR by	Monday, April 8, 2013		x
Regular Finance meeting	Thursday, April 11, 2013	x	
Job Description Questionnaires (JDQs) distributed by HR for reclass requests	Friday, April 12, 2013		x
Employees turn in completed JDQs to department heads by	Tuesday, April 23, 2013		x
MIS issues 2014 IT equipment/programming request forms to departments	Thursday, April 25, 2013		x
Department Heads turn in reviewed JDQs to Human Resources by	Friday, April 26, 2013		x
Dept Heads turn in completed IT equip/Programming request forms to MIS	Friday, May 3, 2013		x
Significant reclassification changes forward to vendor by	Monday, May 6, 2013		x
2014 MIS Requested Budget/programming hours reviewed with Administrator	Thursday, May 9, 2013		x
Regular Finance meeting	Thursday, May 9, 2013	x	
2014 MIS Requested Budget/programming hours submitted to Finance Director	Monday, May 13, 2013		x
MIS reviews departmental IT equipment requests with Administrator	Friday, May 17, 2013		x
Department Heads receive budget guidelines from Administrator	Friday, May 31, 2013		x
GFOA National Conference (Sunday, June 2 <sup>th</sup> – Thursday, June 6 <sup>th</sup> )	Sunday, June 2, 2013		
Vendor returns reclassification recommendations to HR by	Friday, June 7, 2013		x
Preliminary Dept Personnel Budgets available for Courthouse & Sheriff	Wednesday, June 12, 2013		x
Reclassification requests shared with Department Heads	Wednesday, June 12, 2013		x
Preliminary dental rates set	Thursday, June 13, 2013		x
Regular Finance meeting	Thursday, June 13, 2013	x	
Department Head meeting to hand out budget materials	Wednesday, June 12, 2013		x
May monthly financial reports generated	Thursday, June 20, 2013		
Final dental rates set	Thursday, July 11, 2013		x
Regular Finance meeting	Thursday, July 11, 2013	x	
Budget requests due to Administrator (HS due 7/26/13)	Friday, July 19, 2013		x
June monthly financial reports generated	Monday, July 22, 2013		
HS budget request due to Administrator	Friday, July 26, 2013		x
Regular Finance meeting	Thursday, August 8, 2013	x	

Jefferson County  
2014 Budget Calendar

Description	Date	Regular Finance	Budget Related
State EFT sets health ins. & retire. rates - late Aug./early Sept.	Friday, August 30, 2013		x
Budget hearings	Wednesday, September 11, 2013		x
Regular Finance meeting	Thursday, September 12, 2013	x	
Budget hearings	Friday, September 13, 2013		x
Budget hearings	Monday, September 16, 2013		x
Budget hearings, apply fund balance policy, set tax levy	Wednesday, September 18, 2013		x
WGFOA Conference	Wednesday, September 25, 2013		
WGFOA Conference	Thursday, September 26, 2013		
WGFOA Conference	Friday, September 27, 2013		
WCA Annual Conference	Sunday, September 22, 2013		
WCA Annual Conference	Monday, September 23, 2013		
WCA Annual Conference	Tuesday, September 24, 2013		
Present budget and Amendment Procedure to County Board	Tuesday, October 8, 2013		x
Regular Finance meeting	Thursday, October 10, 2013	x	
Public hearing on budget	Tuesday, October 22, 2013		x
Supervisor budget amendments due to Administration at noon on	Thursday, October 24, 2013		x
Finance meeting on Supervisor budget amendments	Friday, November 1, 2013		x
Regular Finance meeting	Thursday, November 14, 2013	x	
Budget Adoption by County Board	Tuesday, November 12, 2013		x
Department Head meeting including review of budget adoption	Wednesday, November 13, 2013		x
Budget must be reported to state by	Thursday, November 14, 2013		x

Jefferson County  
Contingency Fund  
For the Year Ended December 31, 2012

Ledger Date	Description	General (599900)	Other (599908)	Vested Benefits (599909)	Authority	Publish Date
1-Jan-12	Tax Levy	400,000.00	324,701.00			
1-Jan-12	In squad video systems	(44,252.00)			Finance Committee, 2/9/12	15-Feb-12
13-Mar-12	Veterans Services			(4,293.50)	Resolution 2011-96	16-Mar-12
13-Mar-12	Created vested benefits			265,000.00	Resolution 2011-97	16-Mar-12
	Courthouse security				Withdrawn 4/12/12	
30-Apr-12	Hazmat operations	(613.78)			Finance Committee, 4/12/12	15-May-12
30-Apr-12	Bike trail survey work	(7,000.00)			Finance Committee, 5/10/12	15-May-12
14-Jun-12	Clerk of Courts retirement			(16,705.00)	Finance Committee, 6/14/12	20-Jun-12
14-Jun-12	Sheriff Annex bldg study	(3,800.00)			Finance Committee 6/14/12	20-Jun-12
12-Jul-12	Security entrance study	(8,000.00)			Finance Committee 7/12/12	30-Jul-12
12-Jul-12	Squad video systems	(38,000.00)			Finance Committee 7/12/12	30-Jul-12
31-Jul-12	Wage Adjustment		(324,701.00)		Resolution 2012-	30-Jul-12
9-Aug-12	Air Conditioner Compressor	(4,275.00)			Finance Committee 8/9/12	22-Aug-12
13-Sep-12	County Map Printing	(7,000.00)			Finance Committee 9/13/12	17-Sep-12
13-Sep-12	Park Bridge Repair	(15,000.00)			Finance Committee 9/13/12	17-Sep-12
11-Oct-12	Snowblower Attachment	(2,410.00)			Finance Committee 10/11/12	15-Oct-12
2-Nov-12	Security System Human Ser	(47,005.00)			Finance Committee 11/2/12	6-Nov-12
8-Nov-12	Emergency Mngmt Vehicle	(24,999.00)			Finance Committee 11/8/12	20-Nov-12
11-Dec-12	Consultant-Administrator	(20,000.00)			Finance Committee 12/11/12	14-Dec-12
31-Dec-12	Retirement Payout			(73,662.07)	Finance Committee 1/10/13	14-Jan-13
	<b>Total amount available</b>	<b>177,645.22</b>	<b>0.00</b>	<b>170,339.43</b>		
	<b>Net</b>	<b>177,645.22</b>	<b>0.00</b>	<b>170,339.43</b>		

Jefferson County  
Contingency Fund  
For the Year Ended December 31, 2013

Ledger Date	Description	General (599900)	Other (599908)	Vested Benefits (599909)	Authority	Publish Date
1-Jan-13	Tax Levy	400,000.00	250,000.00	265,000.00		
Total amount available		400,000.00	250,000.00	265,000.00		
Net		400,000.00	250,000.00	265,000.00		

## Brian Lamers

---

**From:** Barb Frank  
**Sent:** Monday, February 04, 2013 11:51 AM  
**To:** Gary Petre  
**Cc:** Phil Ristow; Bill Kern; Brian Lamers  
**Subject:** RE: Diesel Fuel Spill - Hwy Dept

I understand that Bill Kern and Phil Ristow had a meeting regarding the diesel spill that happened on 10/22/2012. Others present were representatives of Meffert Oil Company and their Insurance Company. The estimated costs are now approx. \$130,000 at this point. All records in connection to the Diesel Spill are kept with either Bill Kern and/or Phil Ristow. Jefferson County does not have insurance coverage for this incident. Should there be discussion on setting up a 2012 liability on this amount?  
Thanks  
Barb

---

**From:** Gary Petre  
**Sent:** Thursday, October 25, 2012 10:57 AM  
**To:** Barb Frank  
**Subject:** FW: Diesel Fuel Spill - Hwy Dept

FYI.....

Gary R. Petre  
Jefferson County Administrator  
920-674-7101  
[www.jeffersoncountywi.gov](http://www.jeffersoncountywi.gov)

---

**From:** Bill Kern  
**Sent:** Thursday, October 25, 2012 10:54 AM  
**To:** Gary Petre  
**Cc:** Donna Haugom; Phil Ristow  
**Subject:** Diesel Fuel Spill - Hwy Dept

Gary,  
Attached is a short summary of the spill that includes some of the main contacts I have dealt with since the spill. I will give you a call today to give you an update.

Bill

<< File: Diesel Fuel Spill.doc >>

William T. Kern, PE  
Jefferson County Highway Commissioner  
(920) 674-7390  
[billk@jeffersoncountywi.gov](mailto:billk@jeffersoncountywi.gov)

1/28/2013

(8/5/2013 Revised)

**Jefferson County Highway Department  
Fuel Spill Response & Clean-up Costs**

**Incident Date: October 22, 2013**

**Total Invoices Received by the Highway Department**

<u>Company</u>	<u>Cost</u>
Future Environmental Inc.	\$98,903.83
Jefferson Fire Department	\$10,964.15
Jefferson County Highway Dept.	\$8,473.45
Jefferson County Sheriffs Dept.	\$643.77
Sigma Corporation	<u>\$8,958.99</u> *
Waste Management (Soil Removal)	<u>\$6,249.88</u> *
<b>Total</b>	<b><u>\$134,194.07</u></b>



and duty to defend any insured against a "suit" seeking those "damages" including "damages" subject to the "Self Insured Retention." If we provide a defense, we will select an attorney to defend the insured's interests in the "suit." The insured may recommend an attorney, but the decision on the selection of counsel will be within our discretion. But,

- (a) We shall not defend or indemnify you in any action in which you are charged with having committed any criminal act, violated any ordinance or any actions seeking solely non-monetary relief including an action seeking an injunction or act retroactively requiring you to restore monetary benefits, wages or other payments that have been withheld or denied;
  - (b) The amount we pay for "damages" is limited as described in SECTION O - LIMITS OF INSURANCE;
  - (c) We may, at our discretion, investigate any "occurrence" and settle any claim or "suit" that may result, including any claim subject to the "Self Insured Retention"; and
  - (d) Our right and duty to defend ends when we have used up the applicable limit of insurance in the payment of judgments or settlements under Coverages III.A.1 or III.A.2.
- (2) "Damages" because of "bodily injury" include "damages" claimed by any person or organization for care or loss of services or death resulting at any time from the "bodily injury."
  - (3) "Property damage" that is loss of use of tangible property that is not physically injured shall be deemed to occur at the time of the "occurrence" that caused it.

#### **b. EXCLUSIONS**

This insurance does not apply to:

- (1) "Bodily injury" or "property damage" expected or intended from the standpoint of the insured. This exclusion does not apply to "bodily injury" resulting from the use of force to protect persons or property.
- (2) "Bodily injury" or "property damage" for which the insured is obligated to pay "damages" by reason of the assumption of liability in a contract or agreement. This exclusion does not apply to liability for "damages":
  - (a) Assumed in a contract or agreement that is an "insured contract"; or
  - (b) That the insured would have in the absence of the contract or agreement.
- (3) "Bodily injury" or "property damage" for which any insured may be held liable by reason of:

- (a) Causing or contributing to the intoxication of any person;
- (b) The furnishing of alcoholic beverages to a person under the legal drinking age or under the influence of alcohol; or
- (c) Any statute, ordinance or regulation relating to the sale, gift, distribution or use of alcoholic beverages.

This exclusion applies only if you are in the business of manufacturing, distributing, selling, serving or furnishing alcoholic beverages.

- (4) Any obligation of the insured under a workers' compensation, disability benefits or unemployment compensation law or any similar law.

- (5) "Bodily injury" to:

- (a) An employee of the insured arising out of and in the course of employment by the insured, except for "bodily injury" arising directly or indirectly out of sexual abuse, molestation, touching or harassment; or
- (b) The spouse, child, parent, brother or sister of that employee as a consequence of paragraph a. above.

This exclusion applies:

- (c) Whether the insured may be liable as an employer or in any other capacity; and
- (d) To any obligation to share "damages" with or repay someone else who must pay "damages" because of the injury.

This exclusion does not apply to liability assumed by the insured under an "insured contract."

- (6) (a) "Bodily injury" or "property damage" arising out of the actual, alleged or threatened discharge, dispersal, release or escape of "pollutants." This exclusion (6)(a) does not apply to "bodily injury" or "property damage" arising directly out of a "hostile fire." "Hostile fire" is defined as a fire that becomes uncontrollable or breaks out from where it was intended to be. "Hostile fire" does not include underground fires.

- (b) Any loss, cost or expense arising out of any governmental direction or request that you test for, monitor, clean up, remove, contain, treat, detoxify or neutralize "pollutants."

This exclusion does not apply to liability assumed by the insured under an "insured